



# HIGHLAND PARISH

This award-winning community in Virginia Beach offers plenty of green space, walking trails and a playground for the kids. Nine different models, including four plans by Award-winning Southern Living Designer Frank Betz, each with different elevations to choose from, ensures you will find the home of your dreams. A generous design allowance allows you to customize your new home with a variety of our custom features. Whether you are empty nesters or a family of five, you're sure to find your dream home at Highland Parish.

<b>"The Armstrong"</b>	<b>Model 7180</b>
<b>"The Ellington"</b>	<b>Model 7183</b>
<b>"The Dorsey"</b>	<b>Model 7184</b>
<b>"The Miller"</b>	<b>Model 7185</b>
<b>"The Goodman"</b>	<b>Model 7187</b>
<b>"The Lullwater"</b>	<b>Model 6141</b>
<b>"The Dewhurst"</b>	<b>Model 6143</b>
<b>"The Donnelly"</b>	<b>Model 6144</b>
<b>"The Whitehaven"</b>	<b>Model 6145</b>

**Models Available for Viewing**

To schedule an appointment, please call  
**888.379.1767**

**Marketed By**  
**Crestline Realty Corporation**

## How do I get there?

Take 264 to S. Independence Blvd. exit. Stay on S. Independence and cross over Princess Anne Rd. Turn Left on Salem Rd, Go South 1/4 mi. past Elbow Rd. & site is on right. (Brick Entrance sign/walls)

Model Address: 3908 Parish Cove Court, Virginia Beach, VA 23456

**ainsliegroup.com**  
 **888.379.1767**

## "The Armstrong" Model 7180 A



All information contained herein is based on the latest product information available at the time of printing. While Ainslie Group makes all reasonable efforts to provide accurate information, we also maintain the right to improve upon our designs at any time. As a result, there are no guarantees or warranties of prices, plans, specifications or materials represented in this brochure. Furthermore, we do not assume any liability for the accuracy or completeness of the illustrations and specifications presented. Illustrations are artists' interpretations only and are not meant to be an exact interpretation. This brochure shall not be relied upon as a substitute for current information available from your authorized AG representative.



## **"The Armstrong" Model 7180 B**



All information contained herein is based on the latest product information available at the time of printing. While Ainslie Group makes all reasonable efforts to provide accurate information, we also maintain the right to improve upon our designs at any time. As a result, there are no guarantees or warranties of prices, plans, specifications or materials represented in this brochure. Furthermore, we do not assume any liability for the accuracy or completeness of the illustrations and specifications presented. Illustrations are artists' interpretations only and are not meant to be an exact interpretation. This brochure shall not be relied upon as a substitute for current information available from your authorized AG representative.



## **"The Armstrong" Model 7180 F**

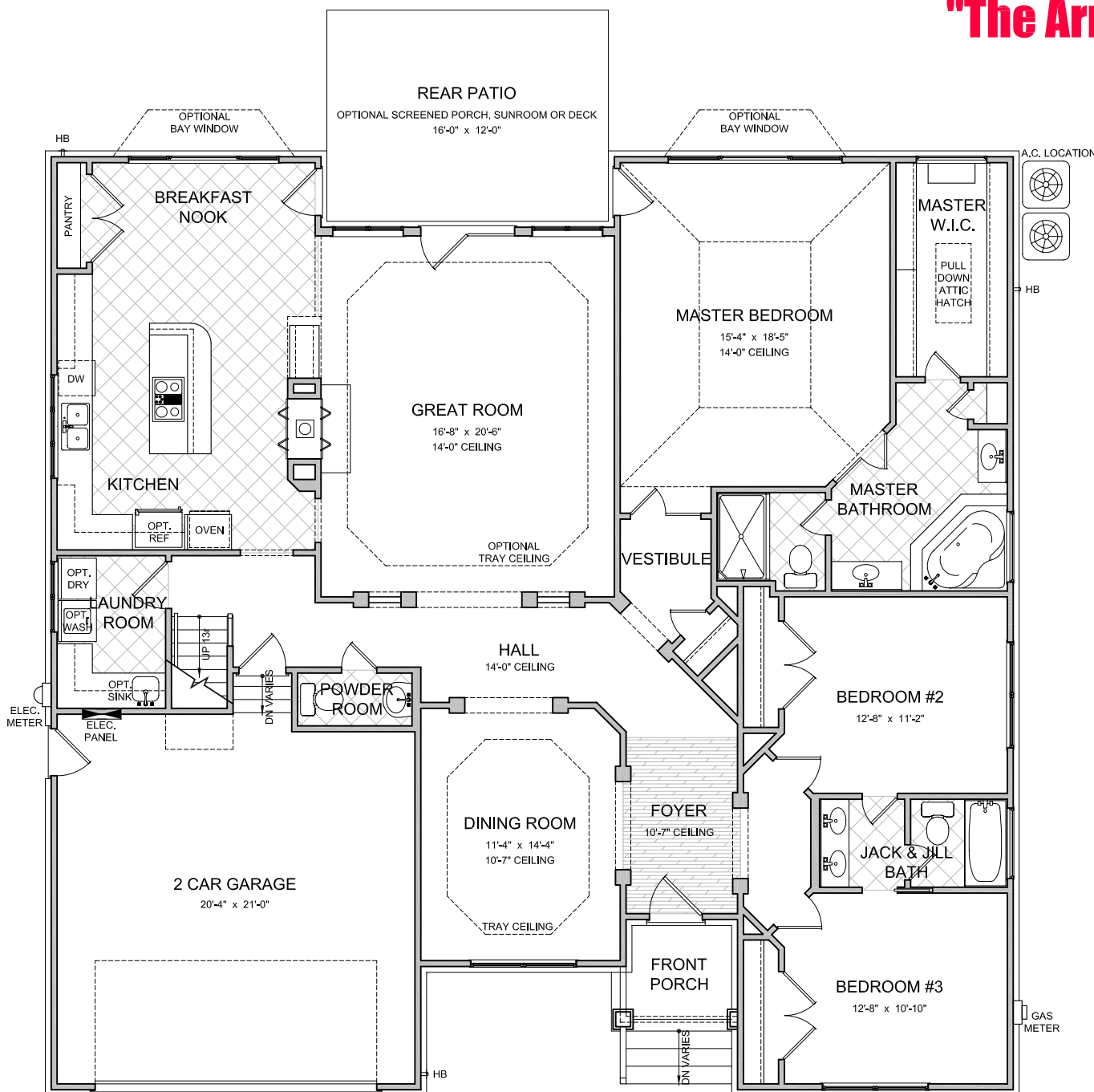


All information contained herein is based on the latest product information available at the time of printing. While Ainslie Group makes all reasonable efforts to provide accurate information, we also maintain the right to improve upon our designs at any time. As a result, there are no guarantees or warranties of prices, plans, specifications or materials represented in this brochure. Furthermore, we do not assume any liability for the accuracy or completeness of the illustrations and specifications presented. Illustrations are artists' interpretations only and are not meant to be an exact interpretation. This brochure shall not be relied upon as a substitute for current information available from your authorized AG representative.



# "The Armstrong" Model 7180

## First Floor Plan Elevation 'A'



### LAYOUT

Bedrooms	3
With Optional	4
Bathrooms	2.5
With Optional	3.5

### AREA Sq.Ft.\*

First Floor	2244
Room Over Garage	376

### Base Living Area 2620

2 Car Garage	444
Sunroom	136
Screened Porch	204
Elevation A Porch	43
Elevation B Porch	43
Elevation F Porch	125

Master Bay Window	21
Kitchen Bay Window	21

\*SQUARE FOOTAGE FOR THIS HOUSE IS CALCULATED USING ANSI Z765-2003 STANDARDS  
ACTUAL SQUARE FOOTAGE MAY VARY DUE TO FIELD CONDITIONS OR CUSTOMIZED FEATURES

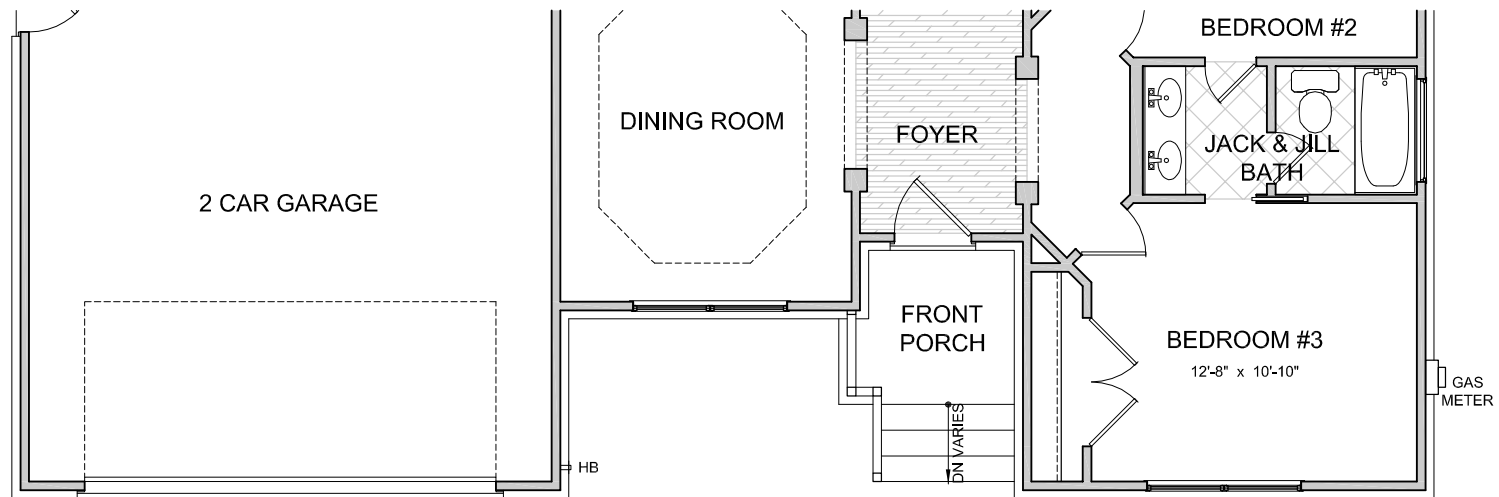
NOT TO SCALE

REVISION DATE: 10/18/08 jb



# "The Armstrong" Model 7180

Elevation 'B'



First Floor Plan

NOT TO SCALE

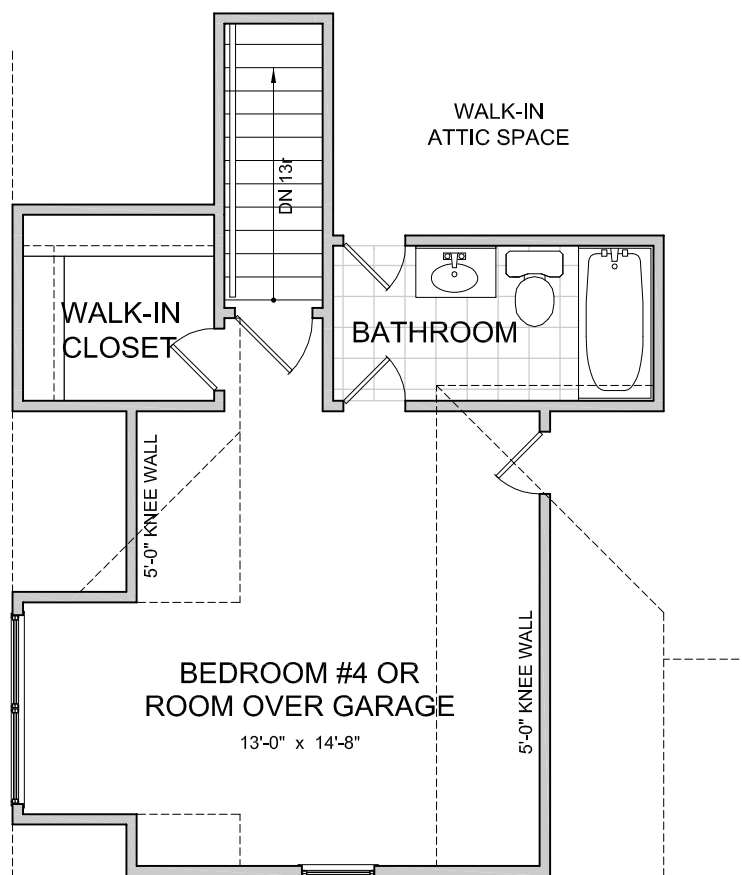
REVISION DATE: 10/18/08 jb



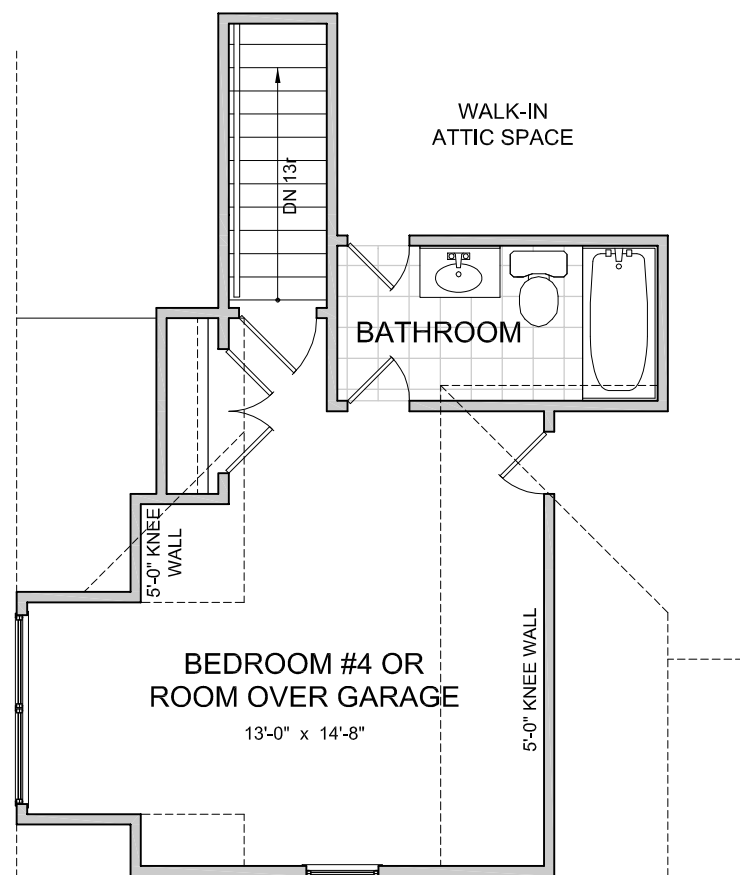


# "The Armstrong" Model 7180

Bedroom #4 Or Room Over Garage With  
Optional Bathroom  
Second Floor Plans



Elevations 'A' & 'F'



Elevation 'B'

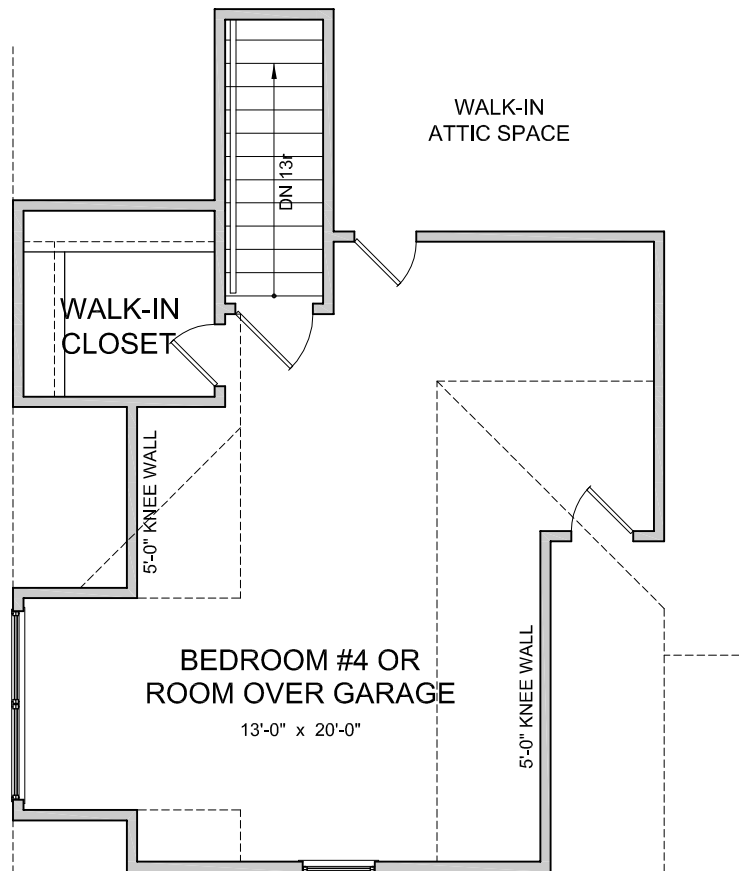
NOT TO SCALE

REVISION DATE: 10/18/08 jb

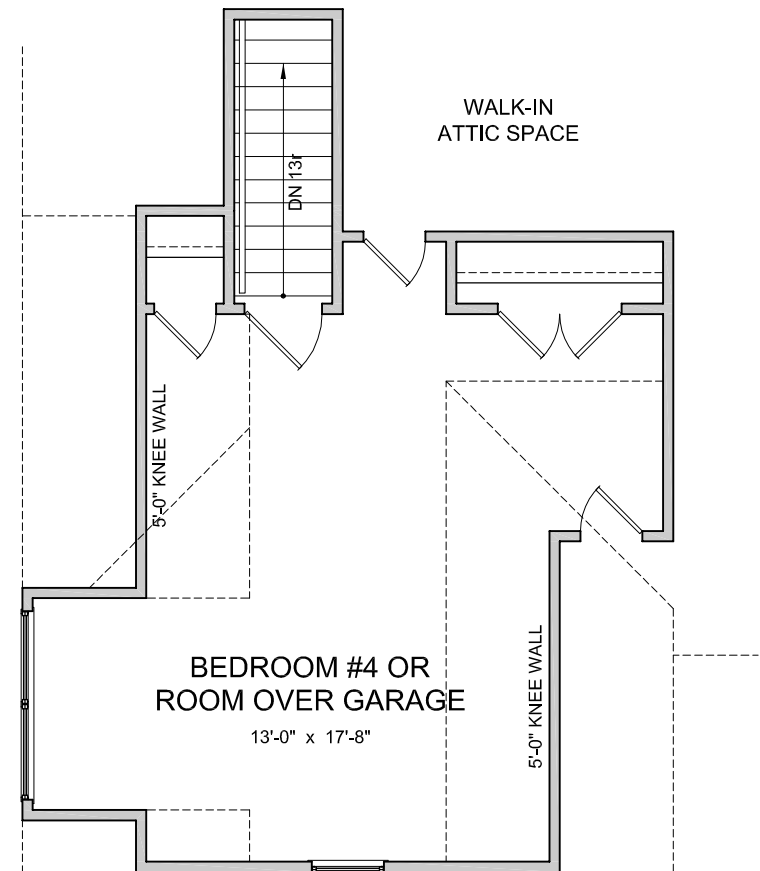


# "The Armstrong" Model 7180

## Bedroom #4 Or Room Over Garage Second Floor Plans



Elevations 'A' & 'F'



Elevation 'B'

NOT TO SCALE

REVISION DATE: 10/18/08 jb





# **"The Ellington" Model 7183 A**



All information contained herein is based on the latest product information available at the time of printing. While Ainslie Group makes all reasonable efforts to provide accurate information, we also maintain the right to improve upon our designs at any time. As a result, there are no guarantees or warranties of prices, plans, specifications or materials represented in this brochure. Furthermore, we do not assume any liability for the accuracy or completeness of the illustrations and specifications presented. Illustrations are artists' interpretations only and are not meant to be an exact interpretation. This brochure shall not be relied upon as a substitute for current information available from your authorized AG representative.





## **"The Ellington" Model 7183 B**



All information contained herein is based on the latest product information available at the time of printing. While Ainslie Group makes all reasonable efforts to provide accurate information, we also maintain the right to improve upon our designs at any time. As a result, there are no guarantees or warranties of prices, plans, specifications or materials represented in this brochure. Furthermore, we do not assume any liability for the accuracy or completeness of the illustrations and specifications presented. Illustrations are artists' interpretations only and are not meant to be an exact interpretation. This brochure shall not be relied upon as a substitute for current information available from your authorized AG representative.





## **"The Ellington" Model 7183 F**



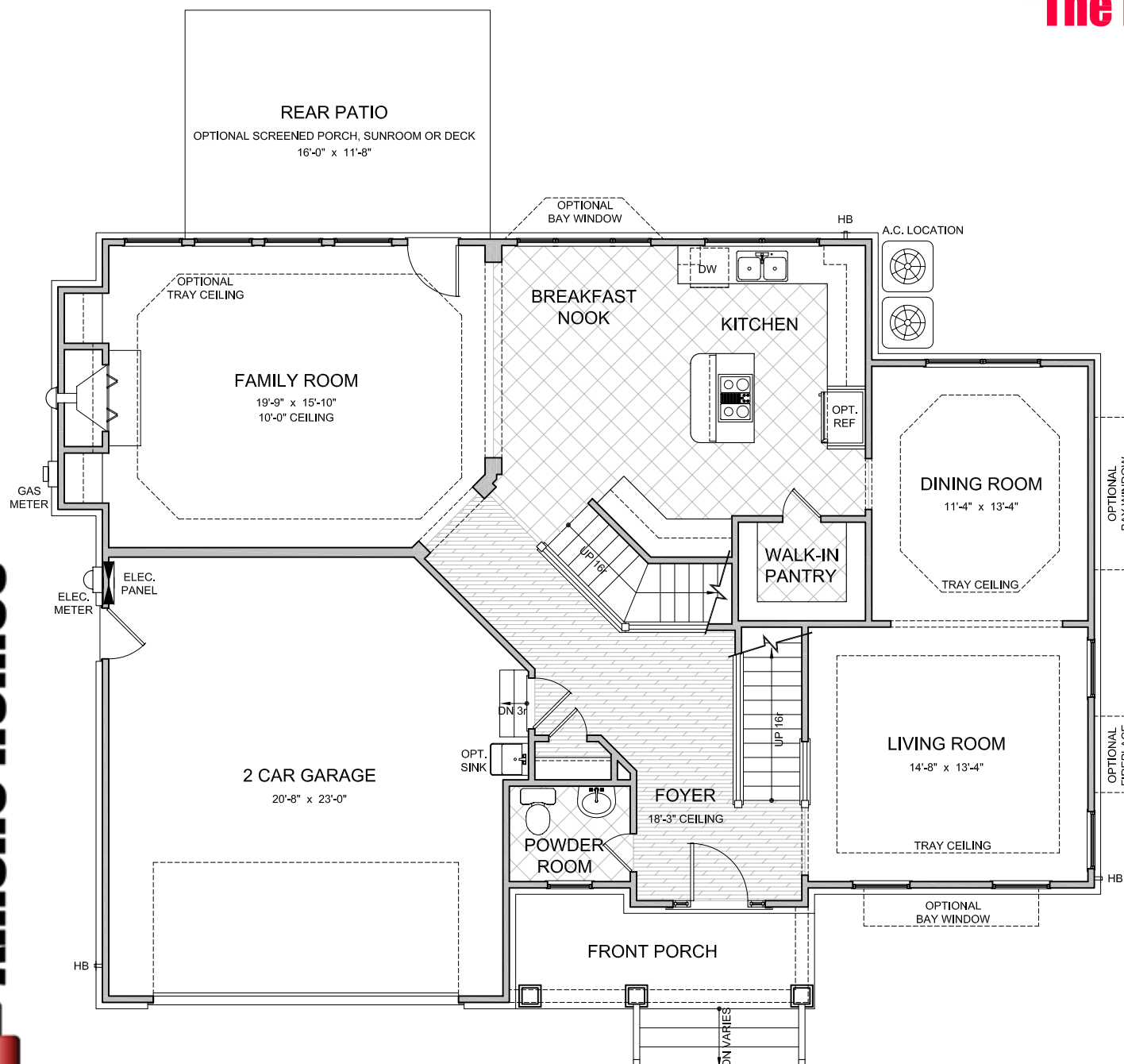
All information contained herein is based on the latest product information available at the time of printing. While Ainslie Group makes all reasonable efforts to provide accurate information, we also maintain the right to improve upon our designs at any time. As a result, there are no guarantees or warranties of prices, plans, specifications or materials represented in this brochure. Furthermore, we do not assume any liability for the accuracy or completeness of the illustrations and specifications presented. Illustrations are artists' interpretations only and are not meant to be an exact interpretation. This brochure shall not be relied upon as a substitute for current information available from your authorized AG representative.





# "The Ellington" Model 7183

## First Floor Plan Elevation 'A'



### LAYOUT

Bedrooms	5
Bathrooms	2.5

### AREA Sq.Ft.\*

First Floor	1369
Second Floor	1622

### Base Living Area 2991

2 Car Garage	490
Sunroom	188
Screened Porch	188
Elevation A Porch	92
Elevation B Porch	52
Elevation F Porch	262
Living Room Bay Window	17
Dining Room Bay Window	15
Kitchen Bay Window	13

\*SQUARE FOOTAGE FOR THIS HOUSE IS CALCULATED USING ANSI Z765-2003 STANDARDS. ACTUAL SQUARE FOOTAGE MAY VARY DUE TO FIELD CONDITIONS OR CUSTOMIZED FEATURES.

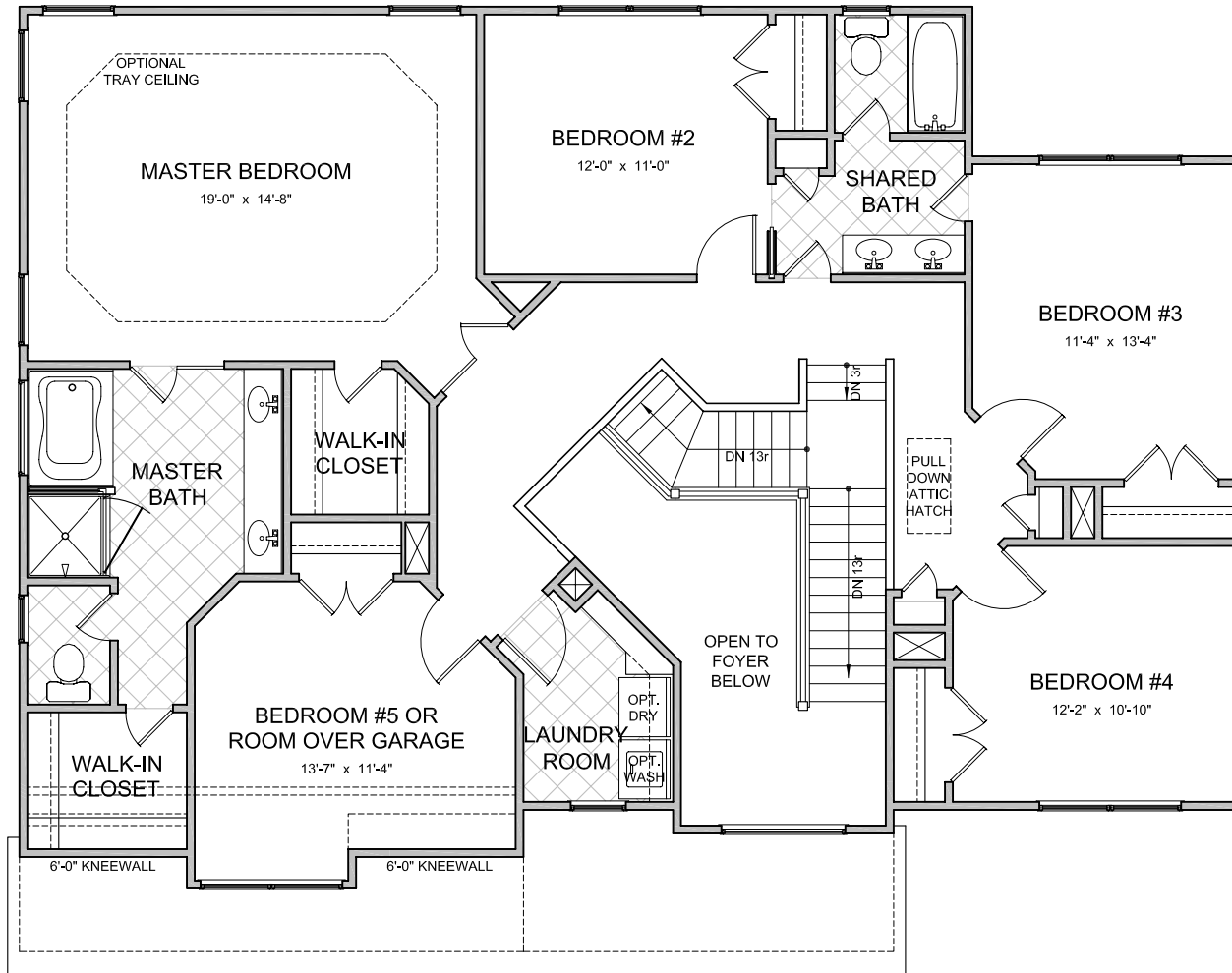
NOT TO SCALE

REVISION DATE: 10/18/08 jb



# "The Ellington" Model 7183

## Second Floor Plan Elevation 'A'



### LAYOUT

Bedrooms	5
Bathrooms	2.5

### AREA Sq.Ft.\*

First Floor	1369
Second Floor	1622

### Base Living Area 2991

2 Car Garage	490
--------------	-----

Sunroom	188
---------	-----

Screened Porch	188
----------------	-----

Elevation A Porch	92
-------------------	----

Elevation B Porch	52
-------------------	----

Elevation F Porch	262
-------------------	-----

Living Room Bay Window	17
------------------------	----

Dining Room Bay Window	15
------------------------	----

Kitchen Bay Window	13
--------------------	----

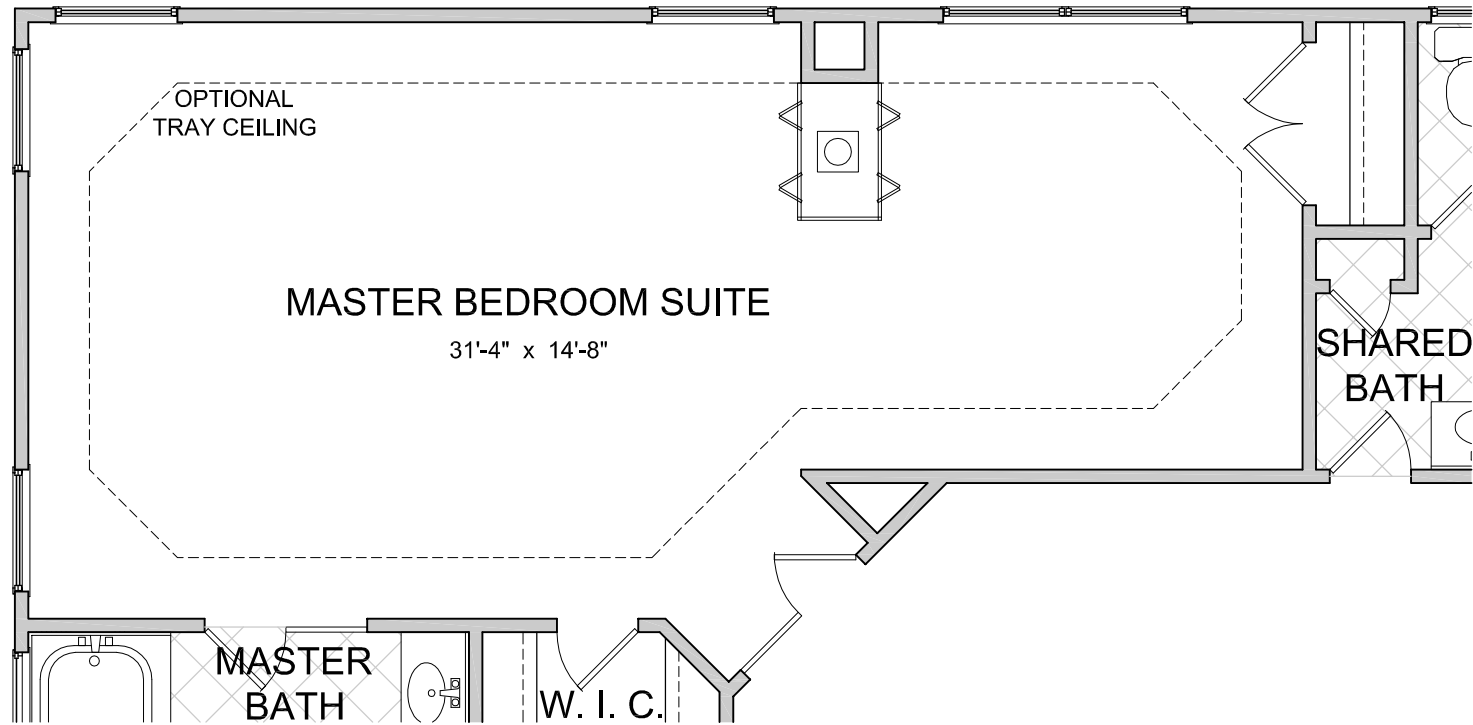
\*SQUARE FOOTAGE FOR THIS HOUSE IS CALCULATED  
USING ANSI Z765-2003 STANDARDS  
ACTUAL SQUARE FOOTAGE MAY VARY DUE TO  
FIELD CONDITIONS OR CUSTOMIZED FEATURES

NOT TO SCALE 


REVISION DATE: 10/18/08 jdb

# "The Ellington" Model 7183

## Optional Master Bedroom Suite



## Second Floor Plan

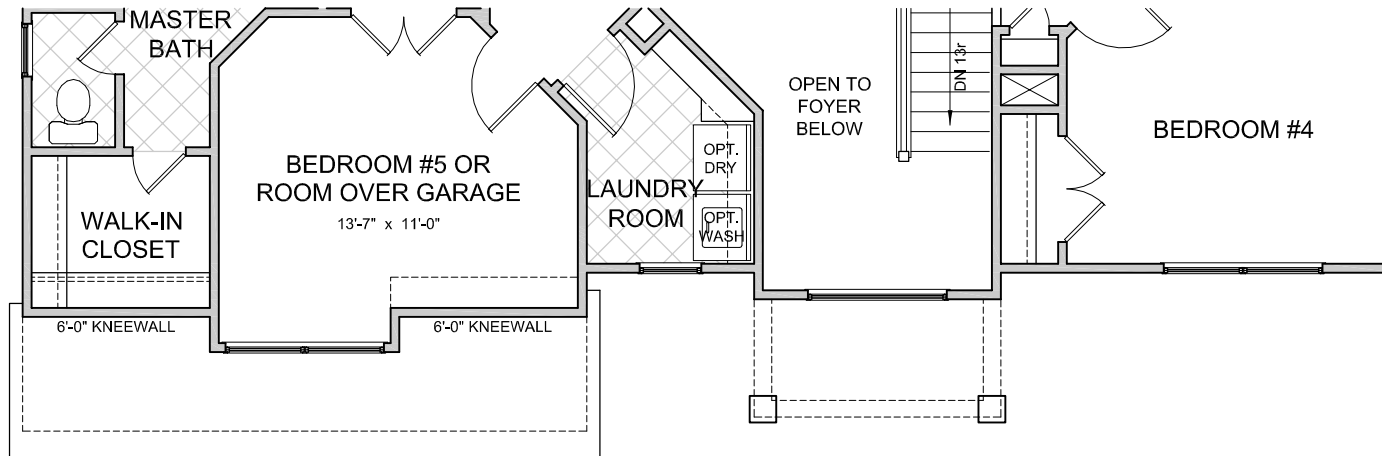
NOT TO SCALE 

REVISION DATE: 10/18/08 jh

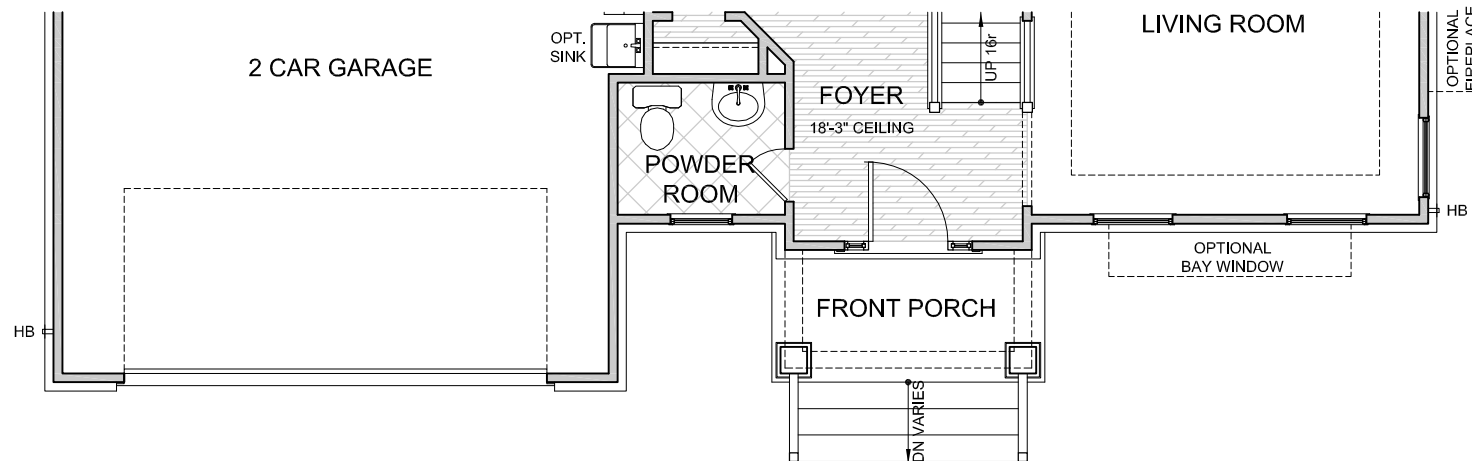


# "The Ellington" Model 7183

Elevation 'B'



## Second Floor Plan



## First Floor Plan

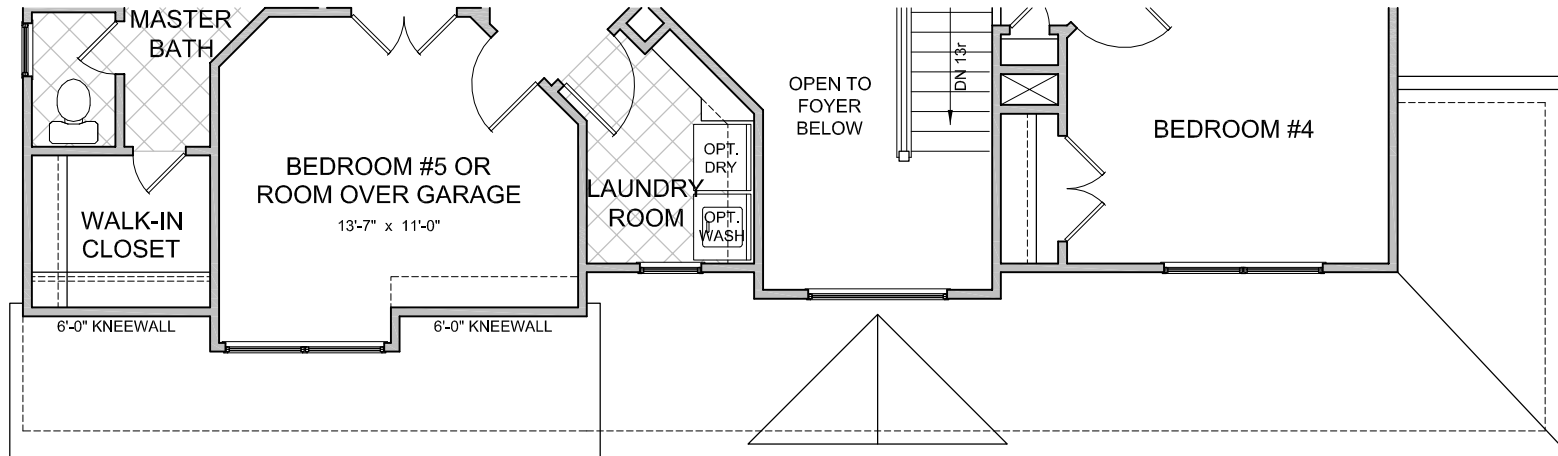
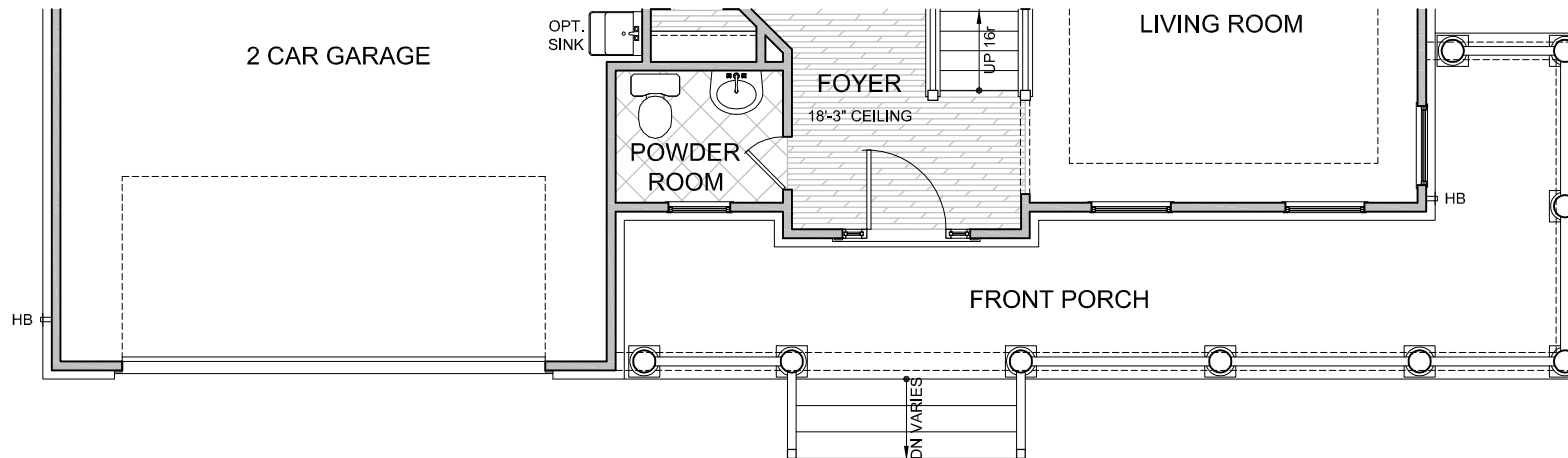
NOT TO SCALE

REVISION DATE: 10/18/08 jpb



**"The Ellington" Model 7183**

Elevation 'F'

**Second Floor Plan****First Floor Plan**

NOT TO SCALE

REVISION DATE: 10/18/08 jpb



# "The Dorsey" Model 7184 A



Ainslie Homes



All information contained herein is based on the latest product information available at the time of printing. While Ainslie Group makes all reasonable efforts to provide accurate information, we also maintain the right to improve upon our designs at any time. As a result, there are no guarantees or warranties of prices, plans, specifications or materials represented in this brochure. Furthermore, we do not assume any liability for the accuracy or completeness of the illustrations and specifications presented. Illustrations are artists' interpretations only and are not meant to be an exact interpretation. This brochure shall not be relied upon as a substitute for current information available from your authorized AG representative.



# **"The Dorsey" Model 7184 E**



**Ainslie Homes**



All information contained herein is based on the latest product information available at the time of printing. While Ainslie Group makes all reasonable efforts to provide accurate information, we also maintain the right to improve upon our designs at any time. As a result, there are no guarantees or warranties of prices, plans, specifications or materials represented in this brochure. Furthermore, we do not assume any liability for the accuracy or completeness of the illustrations and specifications presented. Illustrations are artists' interpretations only and are not meant to be an exact interpretation. This brochure shall not be relied upon as a substitute for current information available from your authorized AG representative.



## "The Dorsey" Model 7184 J



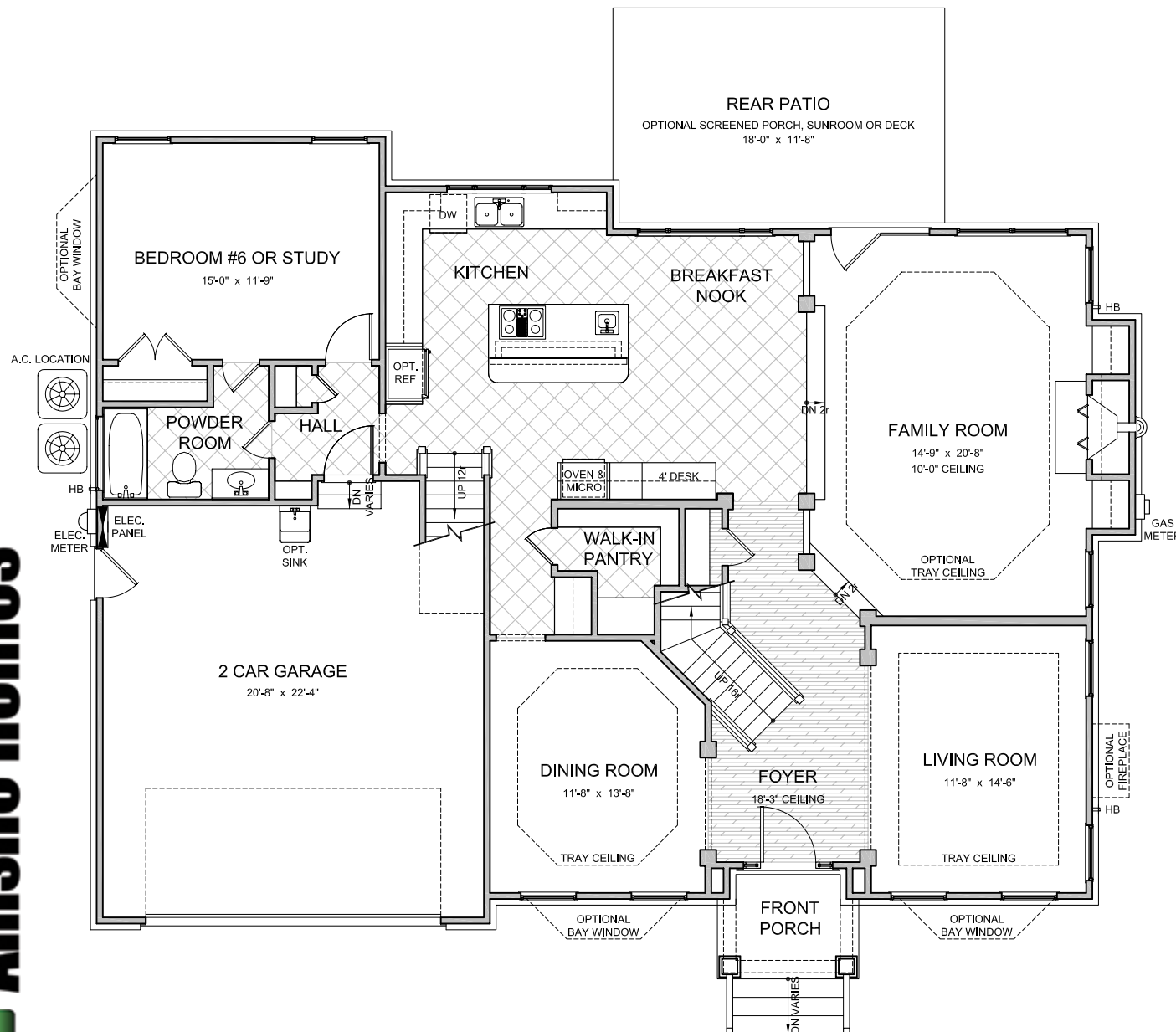
**Ainslie Homes**



All information contained herein is based on the latest product information available at the time of printing. While Ainslie Group makes all reasonable efforts to provide accurate information, we also maintain the right to improve upon our designs at any time. As a result, there are no guarantees or warranties of prices, plans, specifications or materials represented in this brochure. Furthermore, we do not assume any liability for the accuracy or completeness of the illustrations and specifications presented. Illustrations are artists' interpretations only and are not meant to be an exact interpretation. This brochure shall not be relied upon as a substitute for current information available from your authorized AG representative.

# "The Dorsey" Model 7184

## First Floor Plan Elevation 'A'



### LAYOUT

Bedrooms	6
Bathrooms	3

### AREA Sq.Ft.\*

First Floor	1595
Second Floor	1868

### Base Living Area 3463

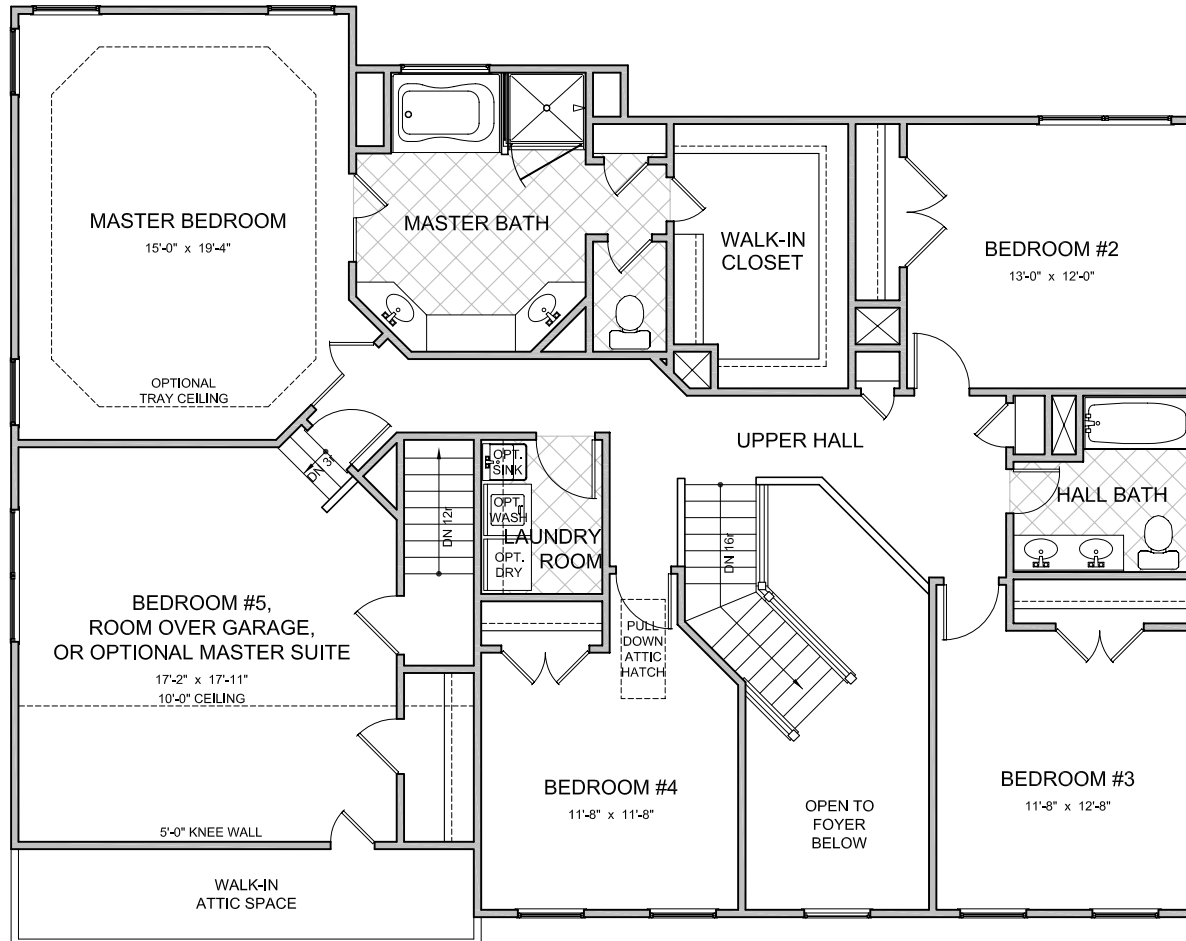
2 Car Garage	504
Sunroom	221
Screened Porch	221
Elevation A Porch	44
Elevation E Porch	201
Elevation J Porch	402
Living Room Bay Window	13
Dining Room Bay Window	13
Bedroom #6 Bay Window	13

\*SQUARE FOOTAGE FOR THIS HOUSE IS CALCULATED USING ANSI Z765-2003 STANDARDS. ACTUAL SQUARE FOOTAGE MAY VARY DUE TO FIELD CONDITIONS OR CUSTOMIZED FEATURES.

NOT TO SCALE  
REVISION DATE: 10/18/08 jb

# "The Dorsey" Model 7184

## Second Floor Plan Elevation 'A'



LAYOUT	
Bedrooms	6
Bathrooms	3

AREA	Sq.Ft.*
First Floor	1595
Second Floor	1868
<b>Base Living Area</b>	<b>3463</b>
2 Car Garage	504
Sunroom	221
Screened Porch	221
Elevation A Porch	44
Elevation E Porch	201
Elevation J Porch	402
Living Room Bay Window	13
Dining Room Bay Window	13
Bedroom #6 Bay Window	13

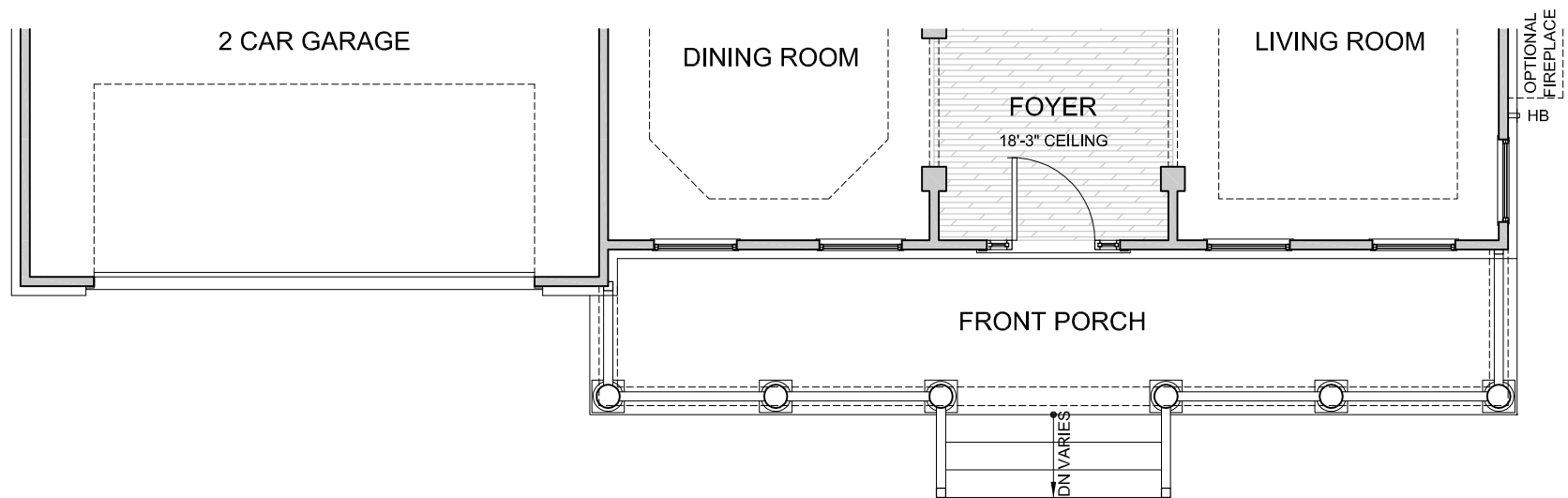
\*SQUARE FOOTAGE FOR THIS HOUSE IS CALCULATED USING ANSI Z765-2003 STANDARDS. ACTUAL SQUARE FOOTAGE MAY VARY DUE TO FIELD CONDITIONS OR CUSTOMIZED FEATURES.

NOT TO SCALE  
REVISION DATE: 10/18/08 jlb




# "The Dorsey" Model 7184

Elevation 'E'



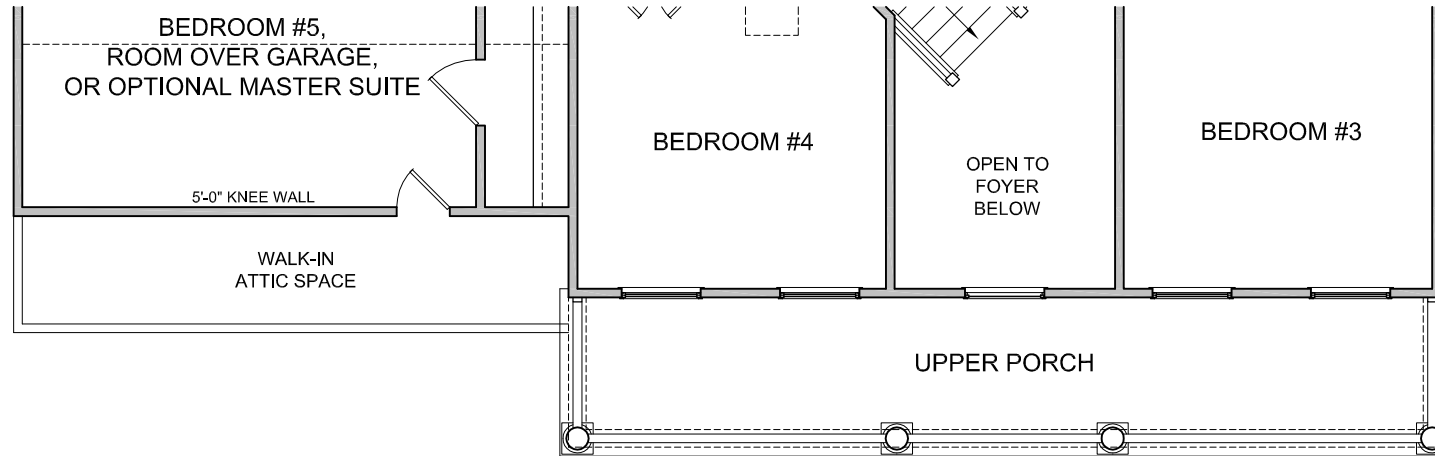
First Floor Plan

NOT TO SCALE 

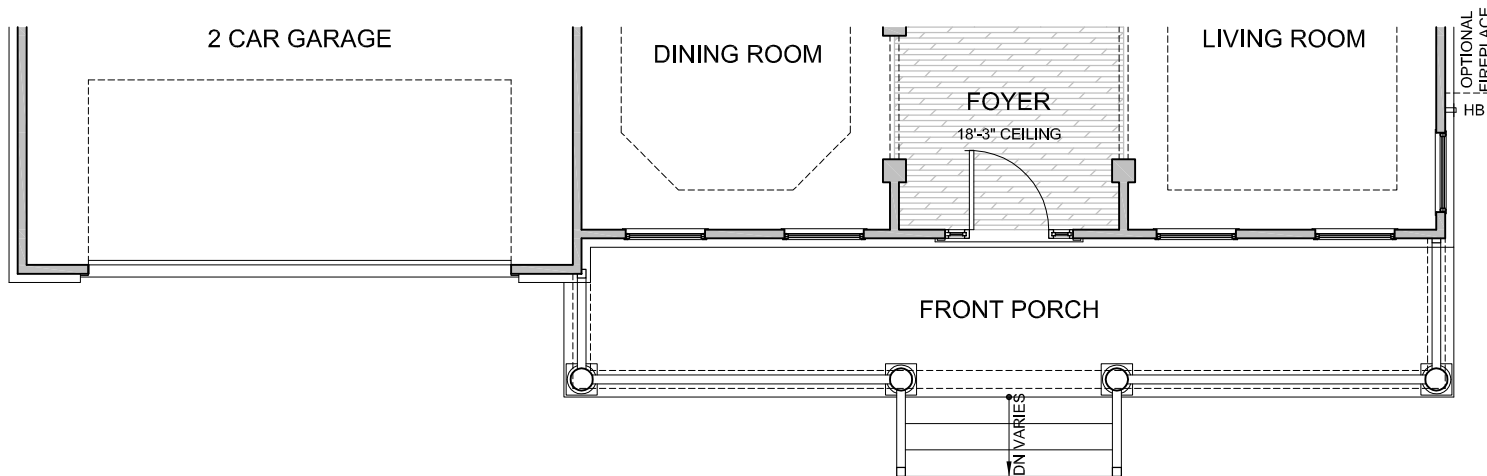
REVISION DATE: 10/18/08 jb

# "The Dorsey" Model 7184

Elevation 'J'



Second Floor Plan



First Floor Plan

NOT TO SCALE

REVISION DATE: 10/18/08 jpb



## **"The Miller" Model 7185 A**



**Ainslie Homes**



All information contained herein is based on the latest product information available at the time of printing. While Ainslie Group makes all reasonable efforts to provide accurate information, we also maintain the right to improve upon our designs at any time. As a result, there are no guarantees or warranties of prices, plans, specifications or materials represented in this brochure. Furthermore, we do not assume any liability for the accuracy or completeness of the illustrations and specifications presented. Illustrations are artists' interpretations only and are not meant to be an exact interpretation. This brochure shall not be relied upon as a substitute for current information available from your authorized AG representative.



## "The Miller" Model 7185 B



**Ainslie Homes**



All information contained herein is based on the latest product information available at the time of printing. While Ainslie Group makes all reasonable efforts to provide accurate information, we also maintain the right to improve upon our designs at any time. As a result, there are no guarantees or warranties of prices, plans, specifications or materials represented in this brochure. Furthermore, we do not assume any liability for the accuracy or completeness of the illustrations and specifications presented. Illustrations are artists' interpretations only and are not meant to be an exact interpretation. This brochure shall not be relied upon as a substitute for current information available from your authorized AG representative.



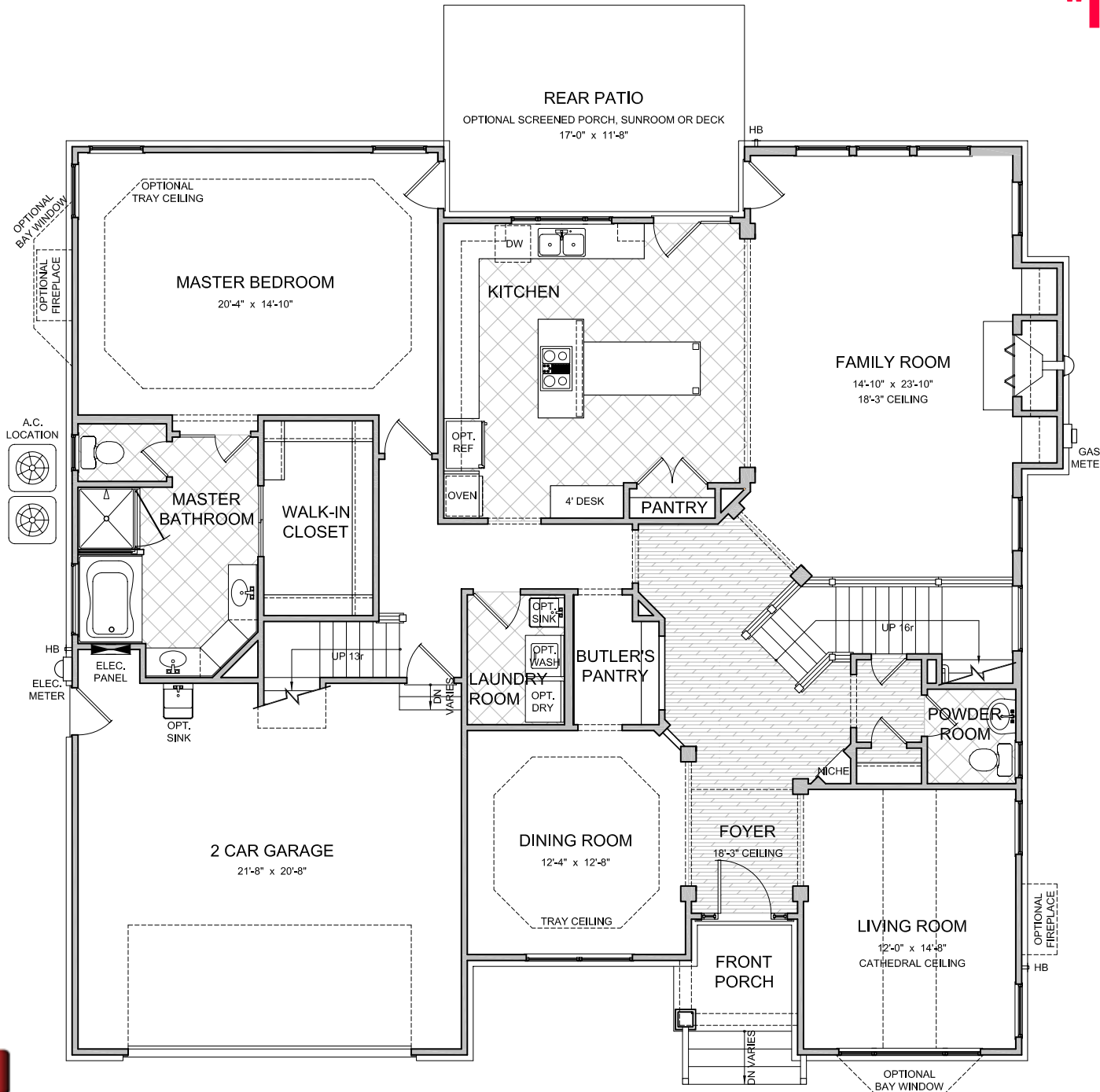
## "The Miller" Model 7185 E



All information contained herein is based on the latest product information available at the time of printing. While Ainslie Group makes all reasonable efforts to provide accurate information, we also maintain the right to improve upon our designs at any time. As a result, there are no guarantees or warranties of prices, plans, specifications or materials represented in this brochure. Furthermore, we do not assume any liability for the accuracy or completeness of the illustrations and specifications presented. Illustrations are artists' interpretations only and are not meant to be an exact interpretation. This brochure shall not be relied upon as a substitute for current information available from your authorized AG representative.

# "The Miller" Model 7185

## First Floor Plan Elevation 'A'



### LAYOUT

Bedrooms	4
With Optional	5
Bathrooms	2.5
With Optional	3.5

### AREA Sq.Ft.\*

First Floor	2132
Second Floor	1294
w/ Optional Master Bedroom	1844

<b>Base Living Area</b>	<b>3426</b>
<b>w/ Optional Master</b>	<b>3976</b>

2 Car Garage	467
Sunroom	221
Screened Porch	221
Elevation A Porch	42
Elevation B Porch	42
Elevation E Porch	107
Master Bay Window	15
Living Room Bay Window	13

\*SQUARE FOOTAGE FOR THIS HOUSE IS CALCULATED USING ANSI Z765-2003 STANDARDS. ACTUAL SQUARE FOOTAGE MAY VARY DUE TO FIELD CONDITIONS OR CUSTOMIZED FEATURES.

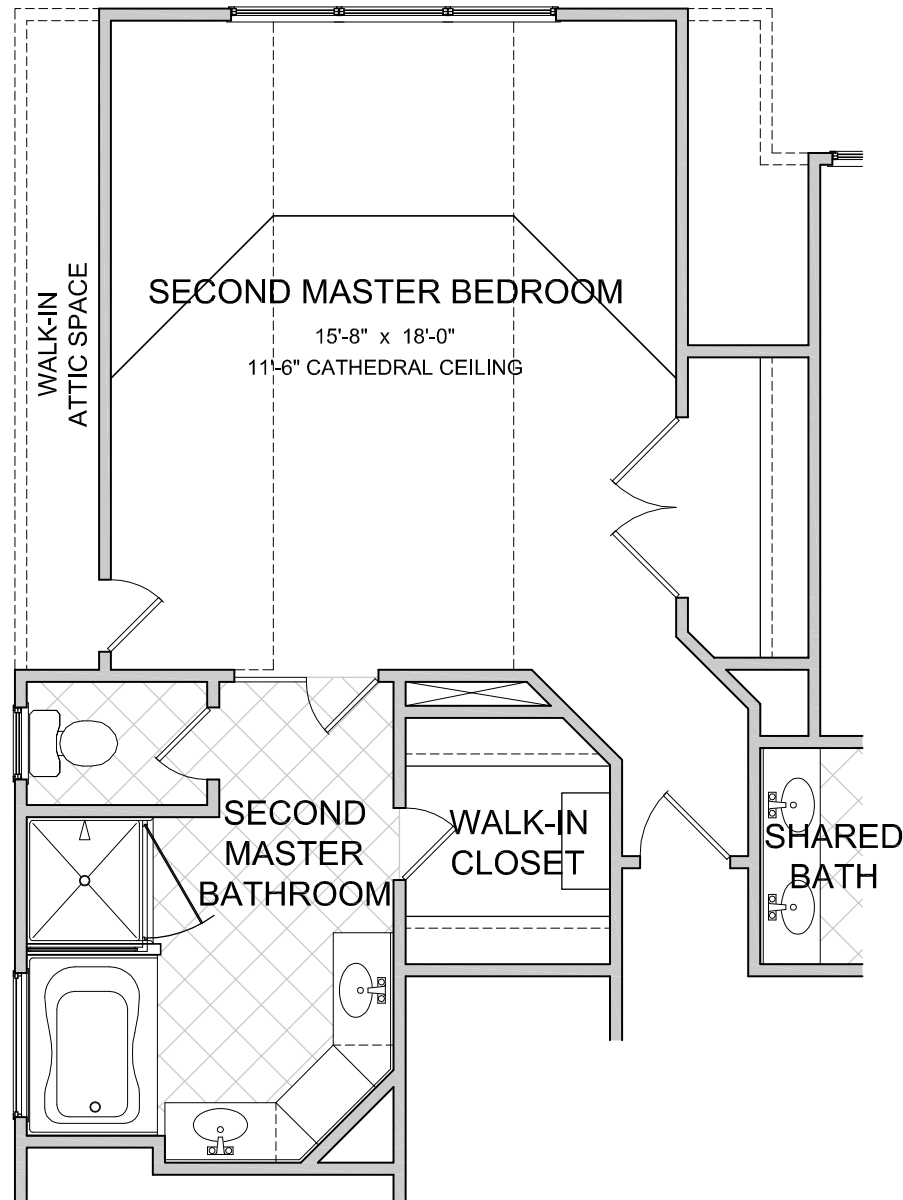
NOT TO SCALE

REVISION DATE: 10/18/08 jb



# "The Miller" Model 7185

Optional Master Bedroom

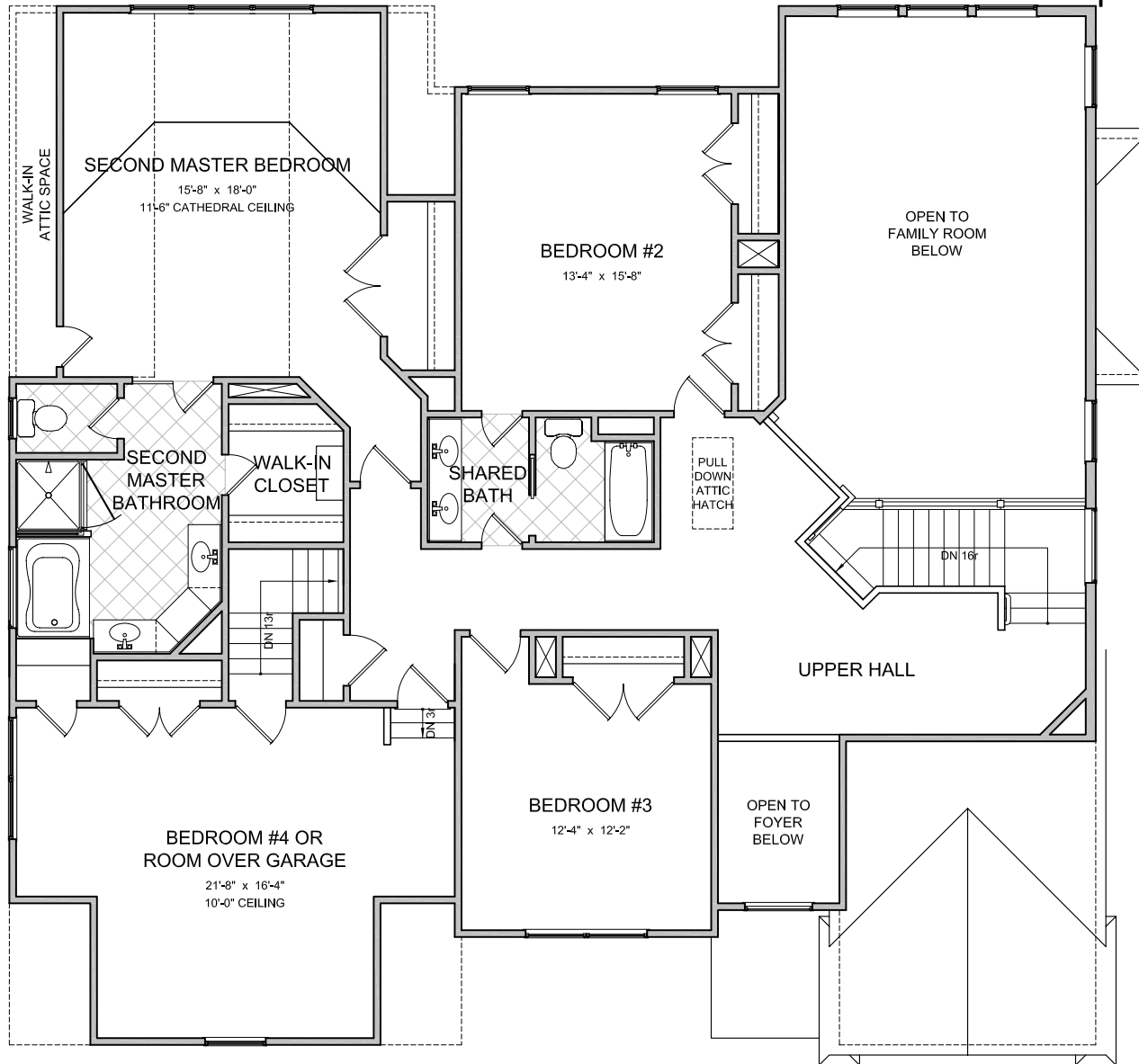


Second Floor Plan

NOT TO SCALE  
REVISION DATE: 10/18/08 jb

# "The Miller" Model 7185

## Optional Second Master Bedroom Second Floor Plan Elevation 'A'



### LAYOUT

Bedrooms	4
With Optional	5
Bathrooms	2.5
With Optional	3.5

### AREA

### Sq.Ft.\*

First Floor	2132
Second Floor	1294
w/ Optional Master Bedroom	1844

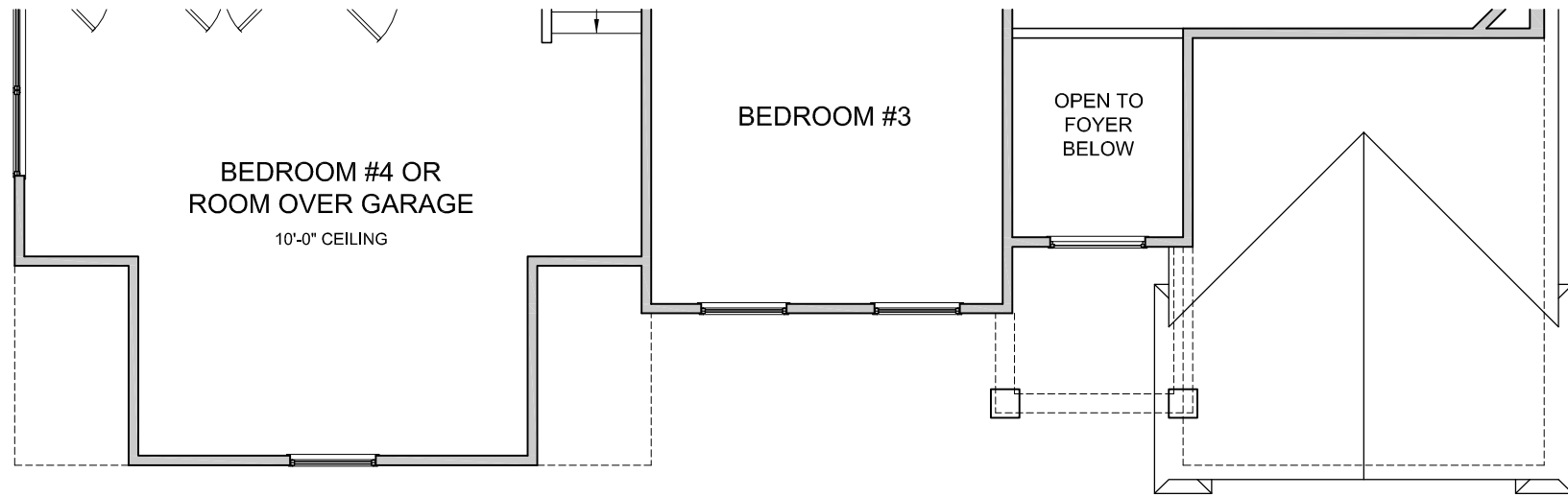
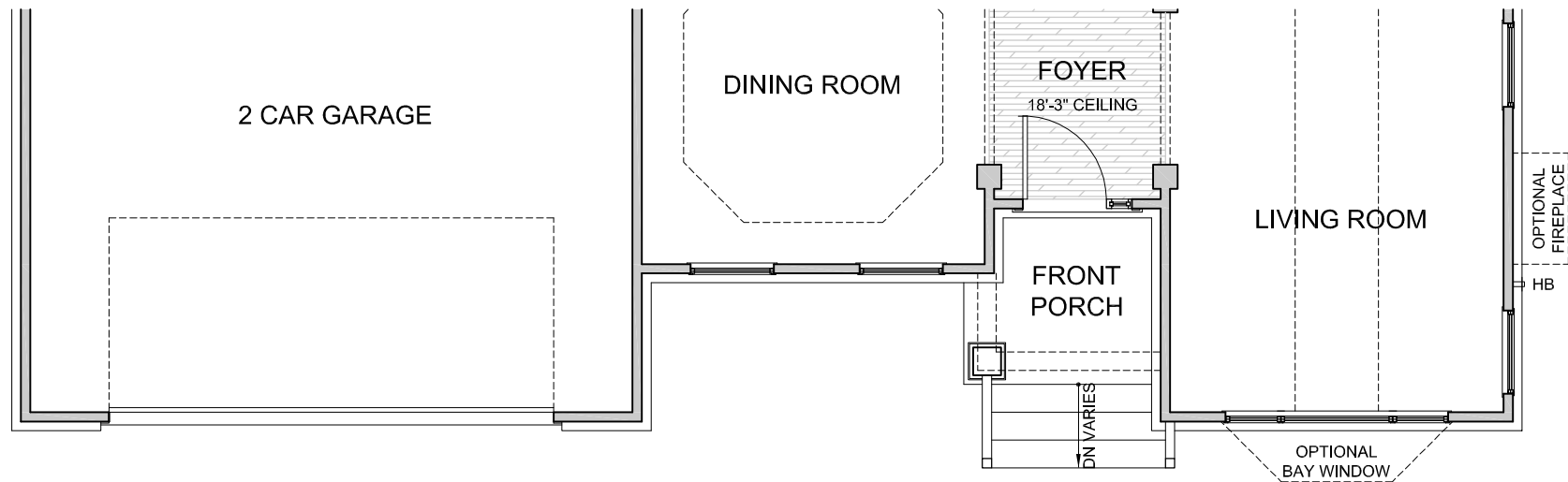
<b>Base Living Area</b>	<b>3426</b>
<b>w/ Optional Master</b>	<b>3976</b>

2 Car Garage	467
Sunroom	221
Screened Porch	221
Elevation A Porch	42
Elevation B Porch	42
Elevation E Porch	107
Master Bay Window	15
Living Room Bay Window	13

\*SQUARE FOOTAGE FOR THIS HOUSE IS CALCULATED USING ANSI Z765-2003 STANDARDS. ACTUAL SQUARE FOOTAGE MAY VARY DUE TO FIELD CONDITIONS OR CUSTOMIZED FEATURES.

NOT TO SCALE

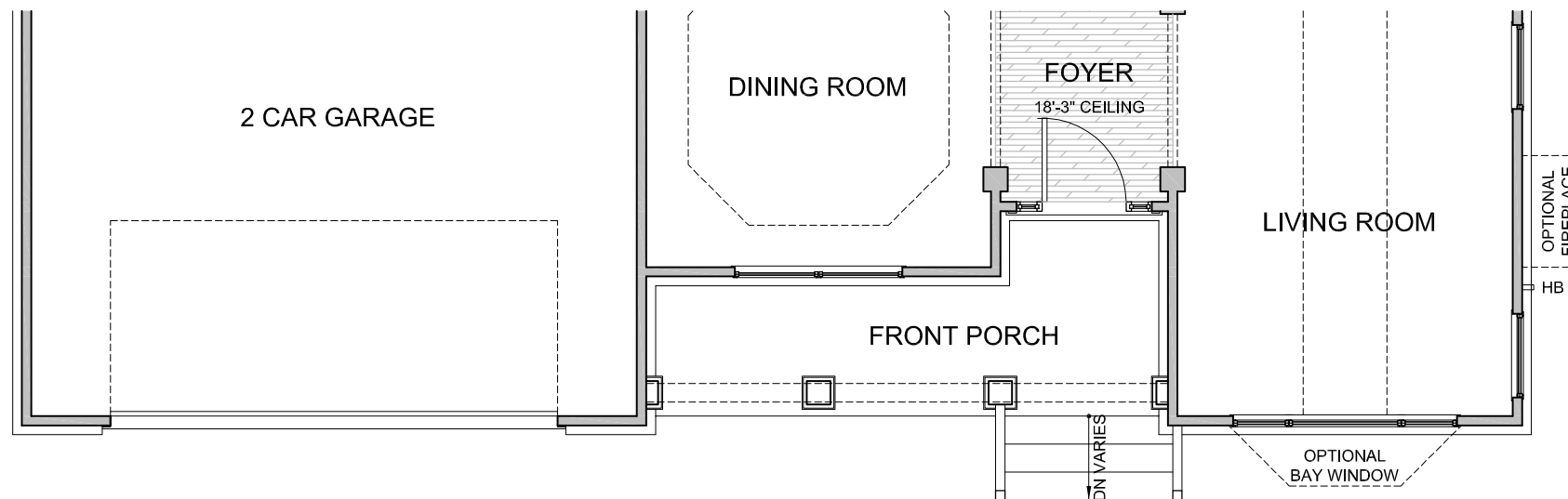
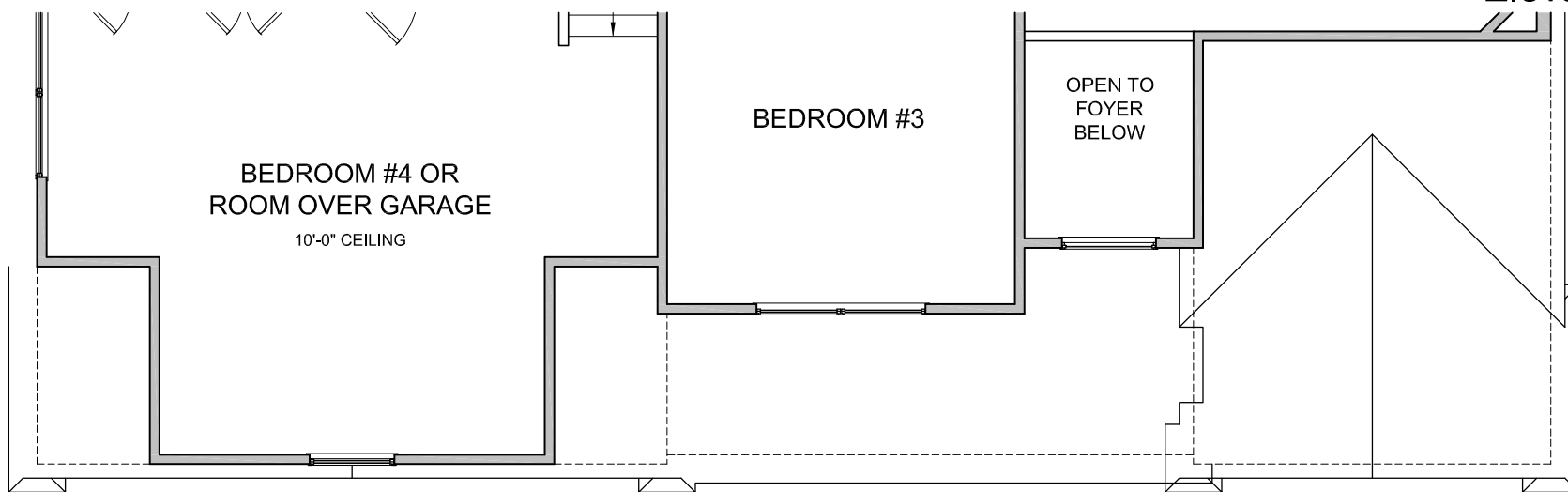
REVISION DATE: 10/18/08

**Second Floor Plan****First Floor Plan****NOT TO SCALE**

REVISION DATE: 10/18/08 jb





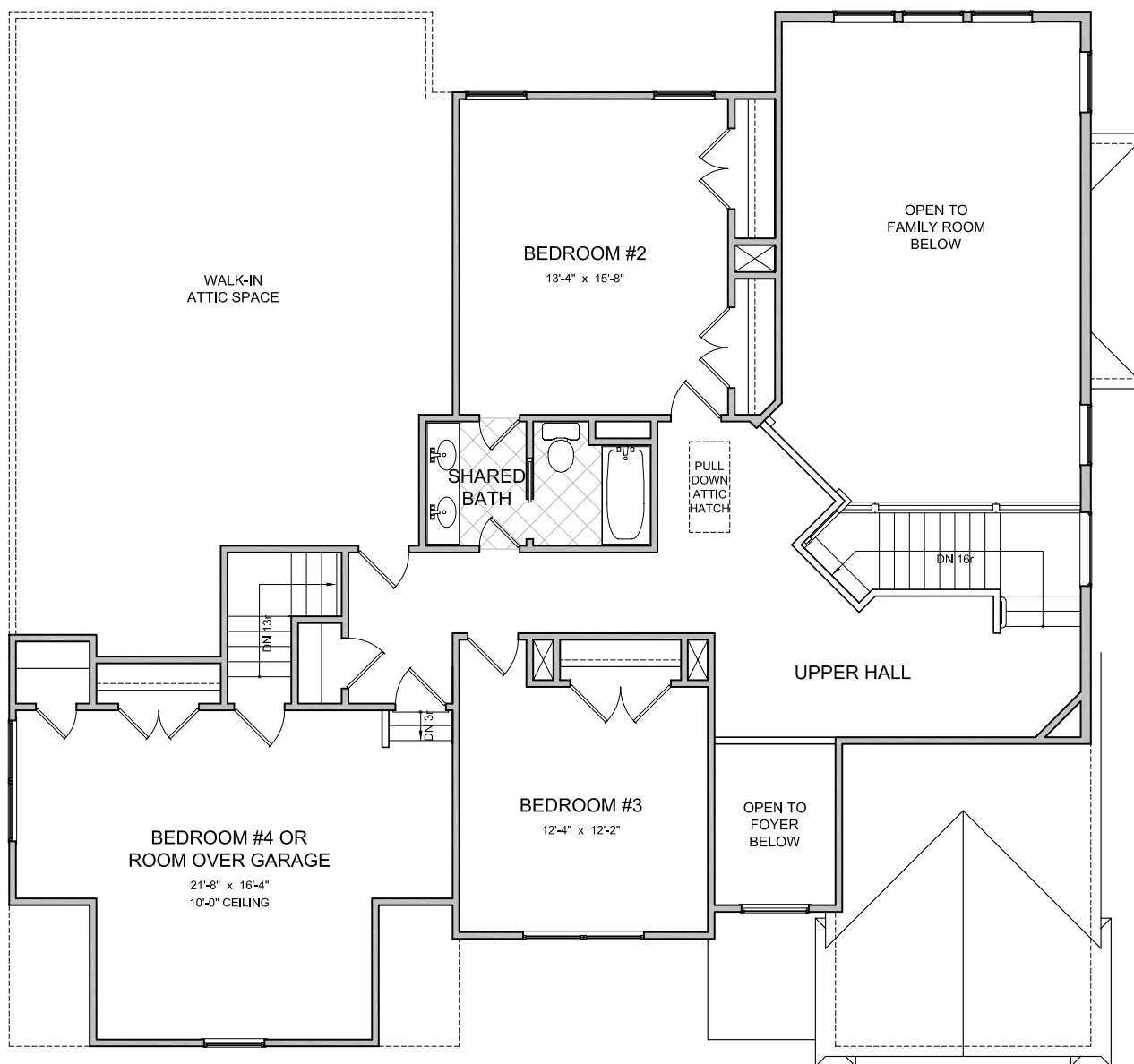


NOT TO SCALE

REVISION DATE: 10/18/08 jb



**Second Floor Plan  
Elevation 'A'**



**LAYOUT**

Bedrooms	4
With Optional	5
Bathrooms	2.5
With Optional	3.5

**AREA Sq.Ft.\***

First Floor	2132
Second Floor	1294
w/ Optional Master Bedroom	1844

<b>Base Living Area</b>	<b>3426</b>
<b>w/ Optional Master</b>	<b>3976</b>

2 Car Garage	467
Sunroom	221
Screened Porch	221
Elevation A Porch	42
Elevation B Porch	42
Elevation E Porch	107
Master Bay Window	15
Living Room Bay Window	13

\*SQUARE FOOTAGE FOR THIS HOUSE IS CALCULATED USING ANSI Z765-2003 STANDARDS. ACTUAL SQUARE FOOTAGE MAY VARY DUE TO FIELD CONDITIONS OR CUSTOMIZED FEATURES.

**NOT TO SCALE**

REVISION DATE: 10/18/08 jb



# "The Goodman" Model 7187 A



Ainslie Homes



All information contained herein is based on the latest product information available at the time of printing. While Ainslie Group makes all reasonable efforts to provide accurate information, we also maintain the right to improve upon our designs at any time. As a result, there are no guarantees or warranties of prices, plans, specifications or materials represented in this brochure. Furthermore, we do not assume any liability for the accuracy or completeness of the illustrations and specifications presented. Illustrations are artists' interpretations only and are not meant to be an exact interpretation. This brochure shall not be relied upon as a substitute for current information available from your authorized AG representative.



## **"The Goodman" Model 7187 B**



**Ainslie Homes**



All information contained herein is based on the latest product information available at the time of printing. While Ainslie Group makes all reasonable efforts to provide accurate information, we also maintain the right to improve upon our designs at any time. As a result, there are no guarantees or warranties of prices, plans, specifications or materials represented in this brochure. Furthermore, we do not assume any liability for the accuracy or completeness of the illustrations and specifications presented. Illustrations are artists' interpretations only and are not meant to be an exact interpretation. This brochure shall not be relied upon as a substitute for current information available from your authorized AG representative.



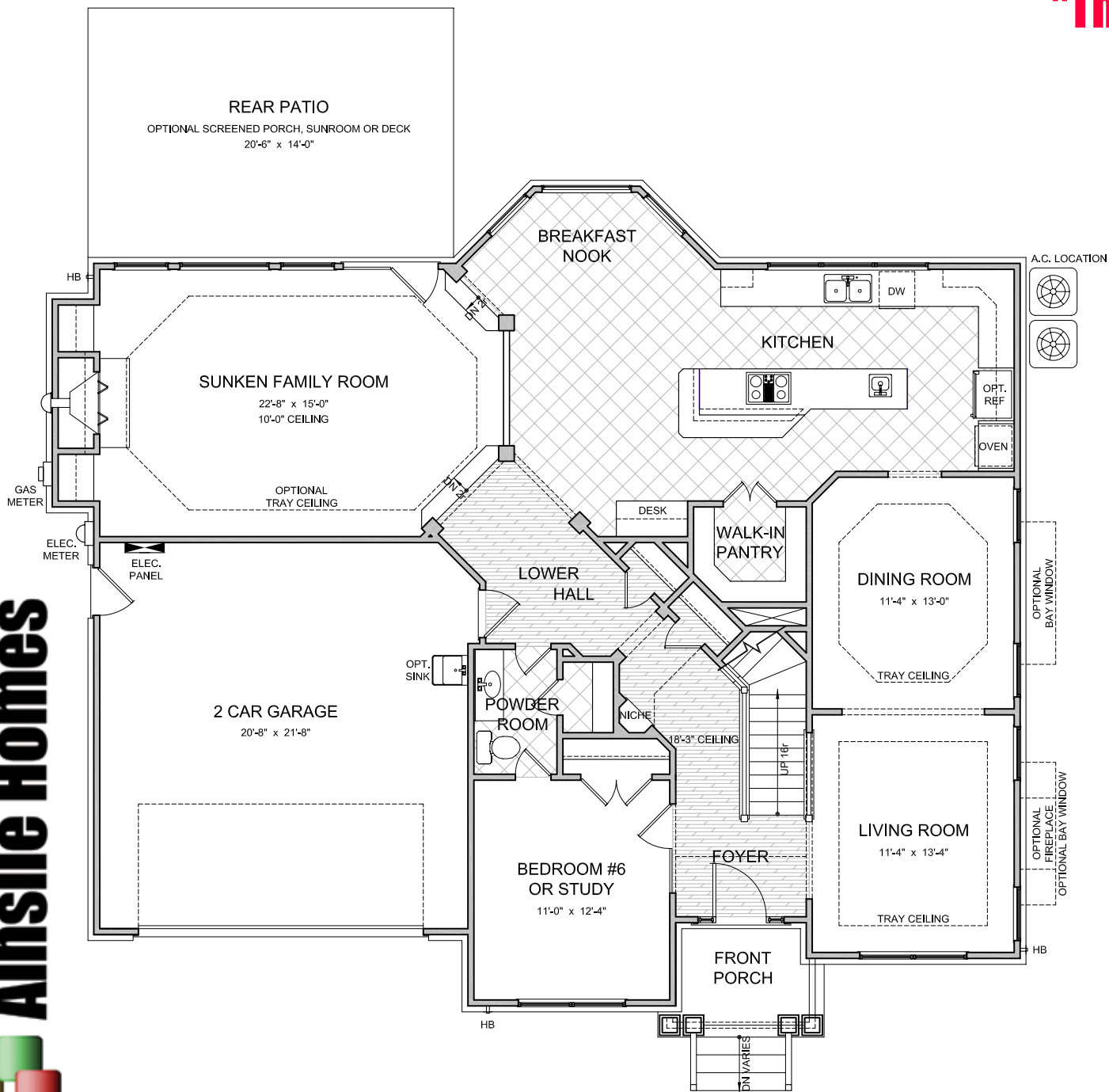


## **"The Goodman" Model 7187 F**



# "The Goodman" Model 7187

## First Floor Plan Elevation 'A'



LAYOUT	
Bedrooms	5
With Optional	6
Bathrooms	2.5
With Optional	4

AREA	Sq.Ft.*
First Floor	1613
Second Floor	1622
Room Over Garage	313
<b>Base Living Area</b>	<b>3548</b>
2 Car Garage	463
Sunroom	188
Screened Porch	188
Elevation A Porch	53
Elevation B Porch	32
Elevation F Porch	187
Living Room Bay Window	15
Dining Room Bay Window	15

\*SQUARE FOOTAGE FOR THIS HOUSE IS CALCULATED USING ANSI Z765-2003 STANDARDS  
ACTUAL SQUARE FOOTAGE MAY VARY DUE TO FIELD CONDITIONS OR CUSTOMIZED FEATURES

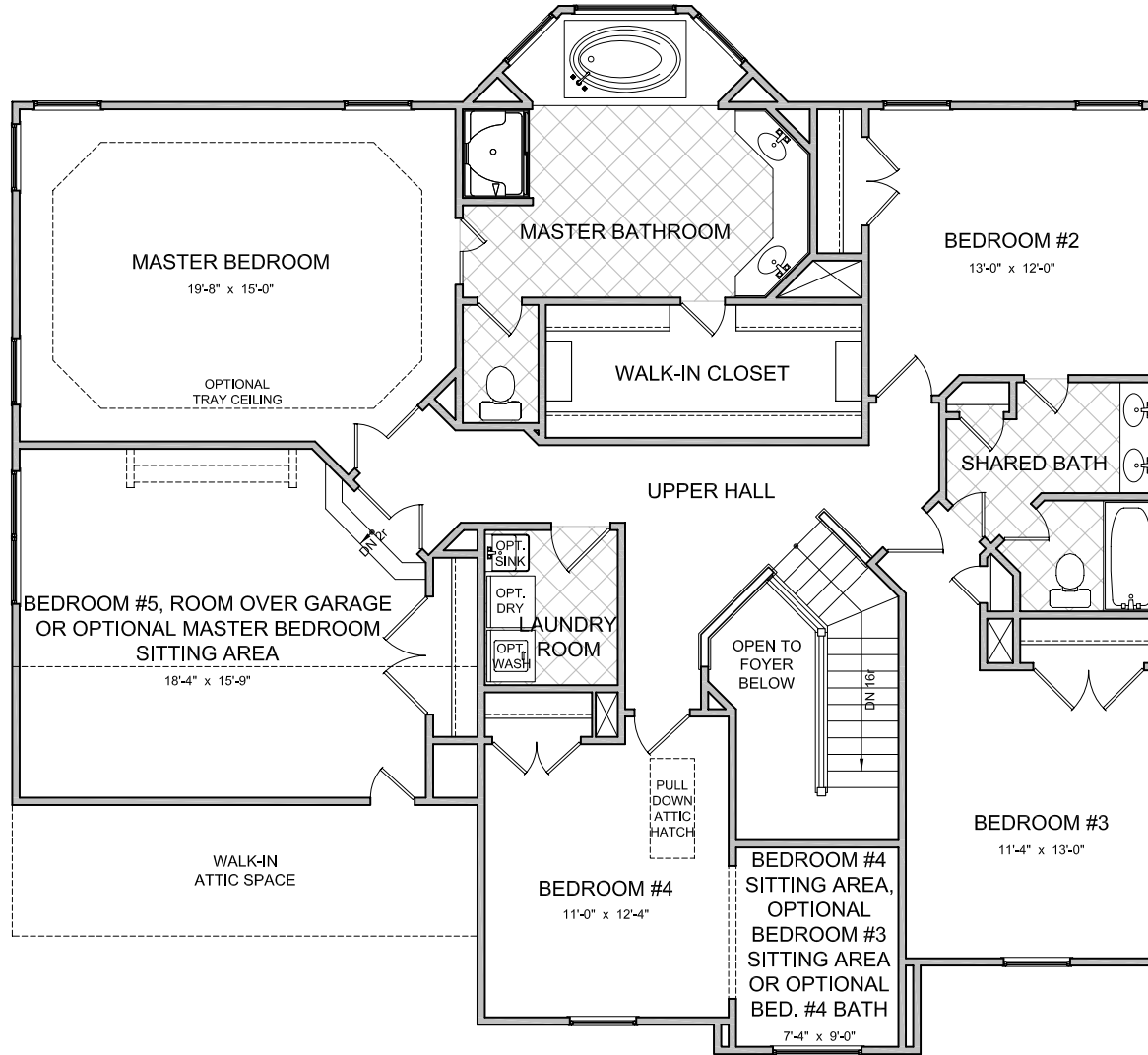
NOT TO SCALE  
REVISION DATE: 10/18/08 jh

All information contained herein is based on the latest product information available at the time of printing. While Ainslie Group makes all reasonable efforts to provide accurate information, we also maintain the right to improve upon our designs at any time. As a result, there are no guarantees or warranties of prices, plans, specifications or materials represented in this brochure. Furthermore, we do not assume any liability for the accuracy or completeness of the illustrations and specifications presented. Illustrations are artists' interpretations only and are not meant to be an exact interpretation. This brochure shall not be relied upon as a substitute for current information available from your authorized AG representative.



# "The Goodman" Model 7187

## Second Floor Plan Elevation 'A'



### LAYOUT

Bedrooms	5
With Optional	6
Bathrooms	2.5
With Optional	4

### AREA Sq.Ft.\*

First Floor	1613
Second Floor	1622
Room Over Garage	313

### Base Living Area 3548

2 Car Garage	463
Sunroom	188
Screened Porch	188
Elevation A Porch	53
Elevation B Porch	32
Elevation F Porch	187
Living Room Bay Window	15
Dining Room Bay Window	15

\*SQUARE FOOTAGE FOR THIS HOUSE IS CALCULATED USING ANSI Z765-2003 STANDARDS. ACTUAL SQUARE FOOTAGE MAY VARY DUE TO FIELD CONDITIONS OR CUSTOMIZED FEATURES.

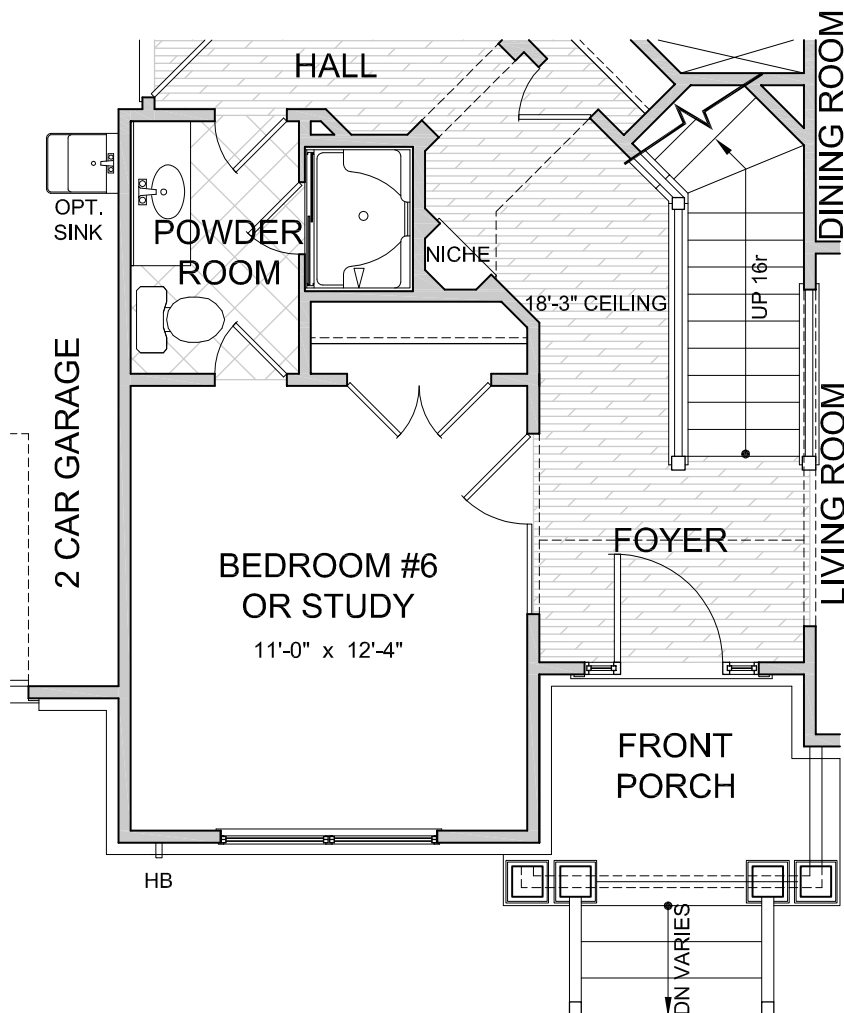
NOT TO SCALE

REVISION DATE: 10/18/08 jb



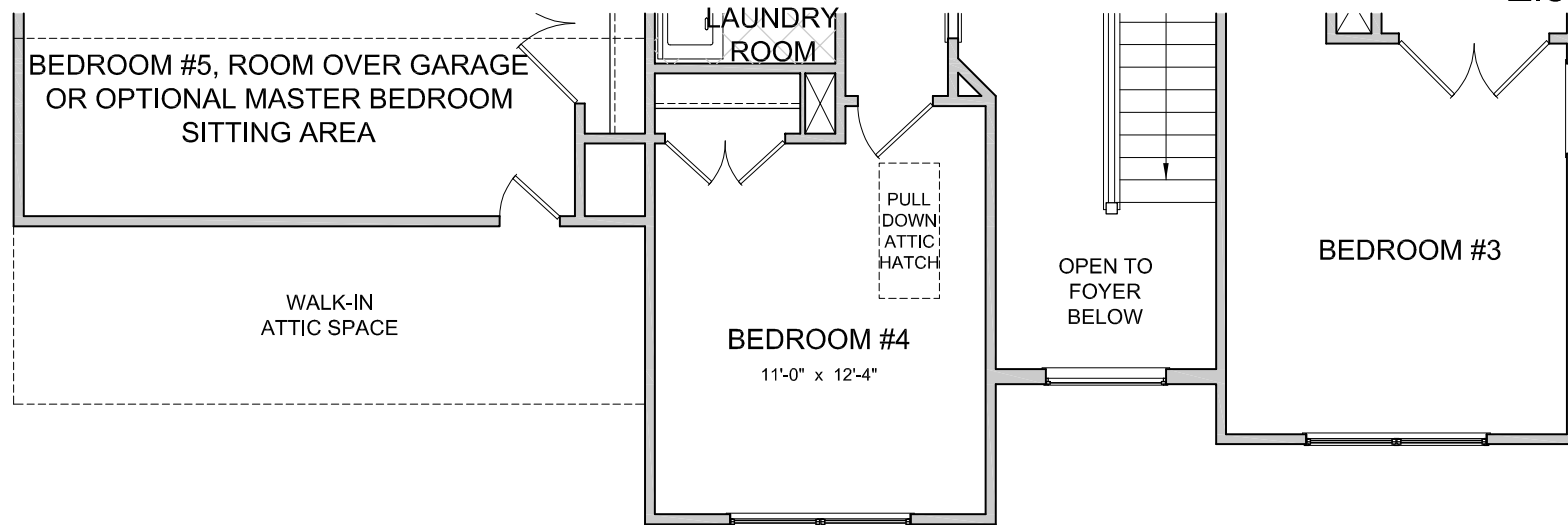
# "The Goodman" Model 7187

Optional Shower In Powder Room

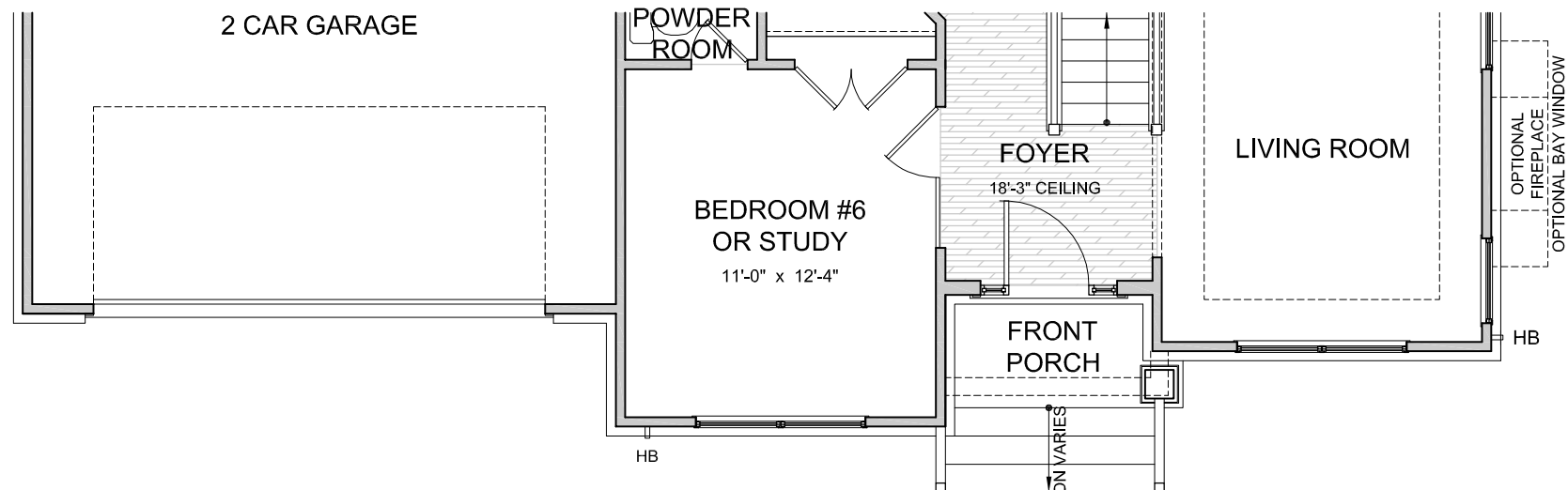


First Floor Plan

NOT TO SCALE  
REVISION DATE: 10/18/08 jb



**Second Floor Plan**

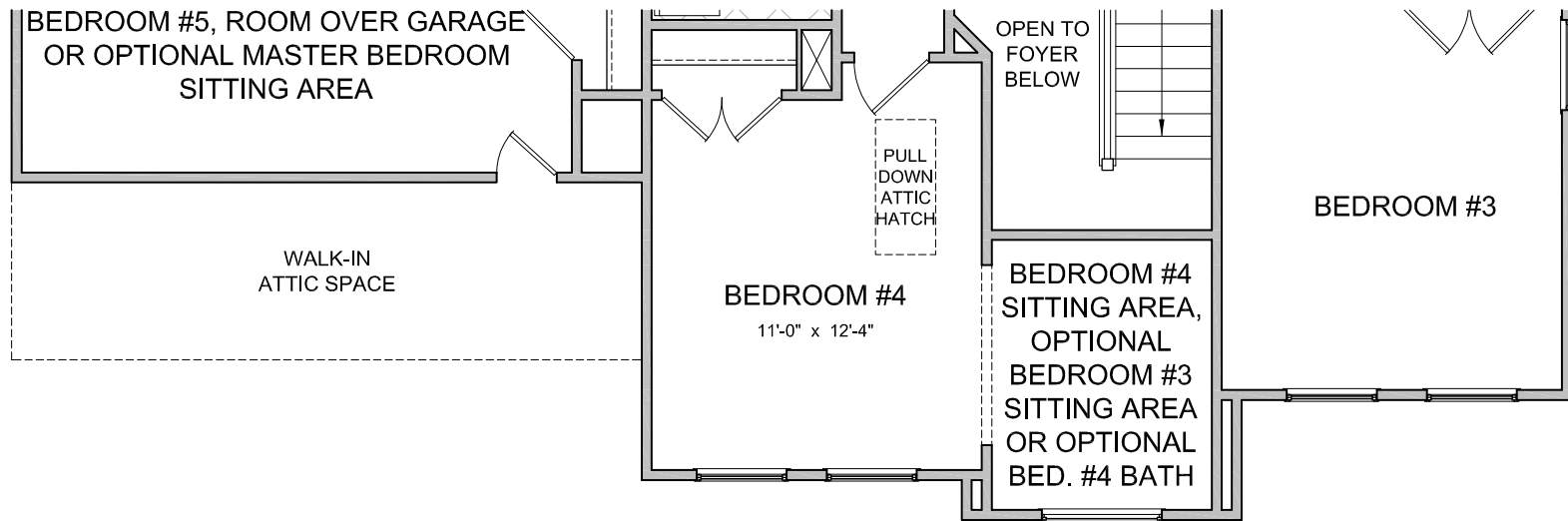
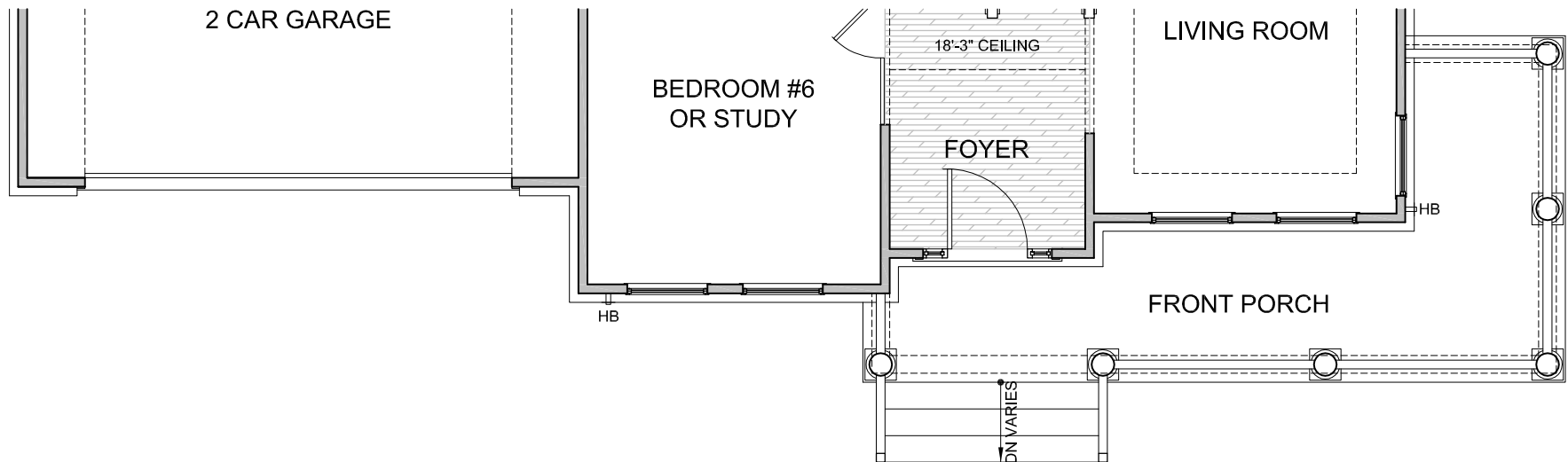


**First Floor Plan**





Elevation 'F'

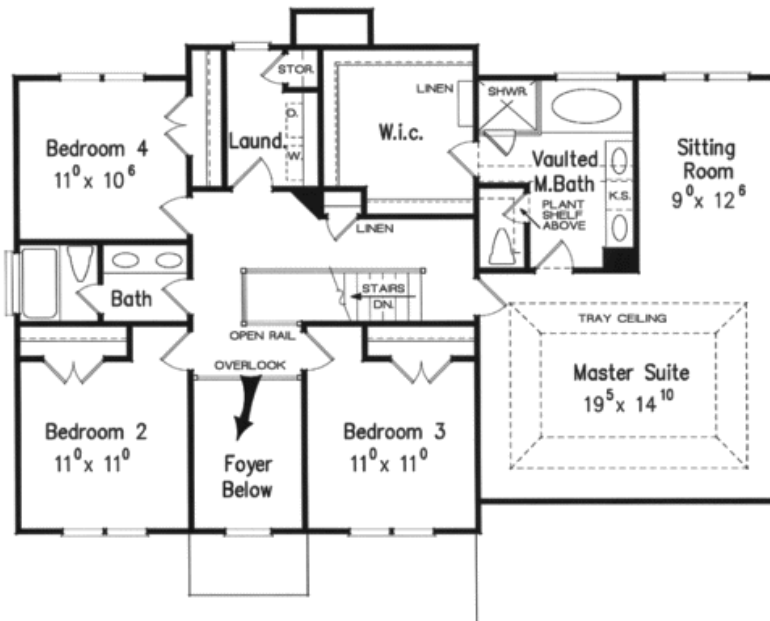
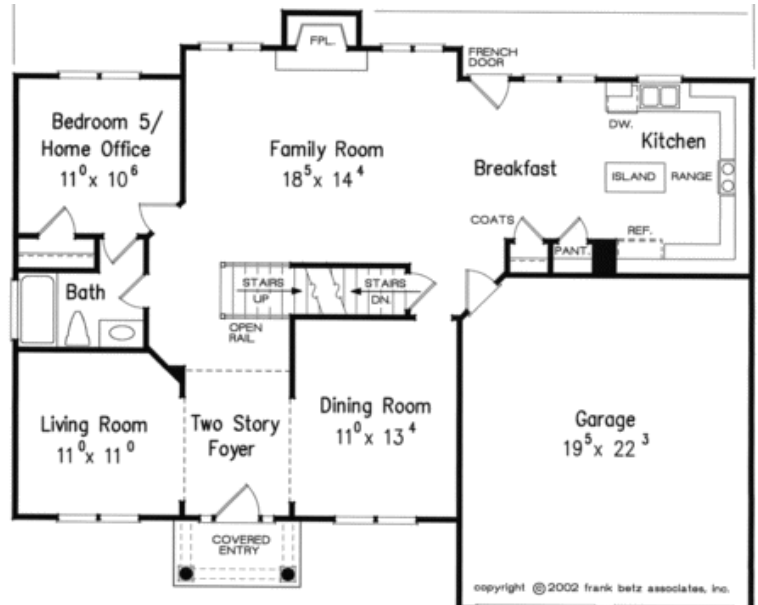
**Second Floor Plan****First Floor Plan**

NOT TO SCALE

REVISION DATE: 10/18/08 jb



# **“The Dewhurst” Model 6144**



## **Square Footage**

Total	2607
First Floor	1217
Second Floor	1390
Garage	441

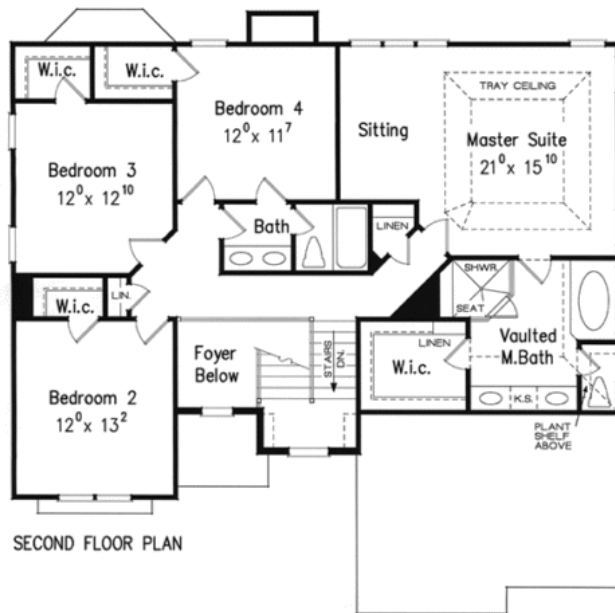
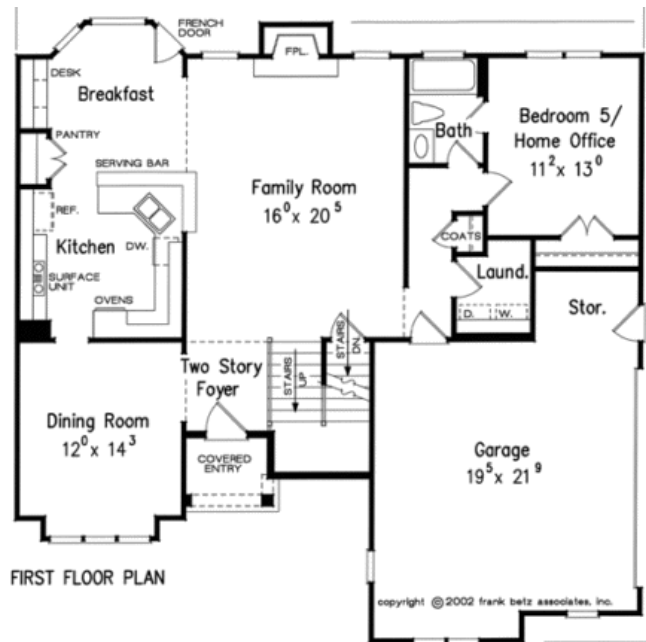
Bedrooms	5
Baths	3.0

## **Dimensions**

Width	50' - 0"
Depth	40' - 4"
Height	29' - 3"



## "The Donnelly" Model 6143



### Square Footage

Total	2513
First Floor	1240
Second Floor	1273
Garage	460

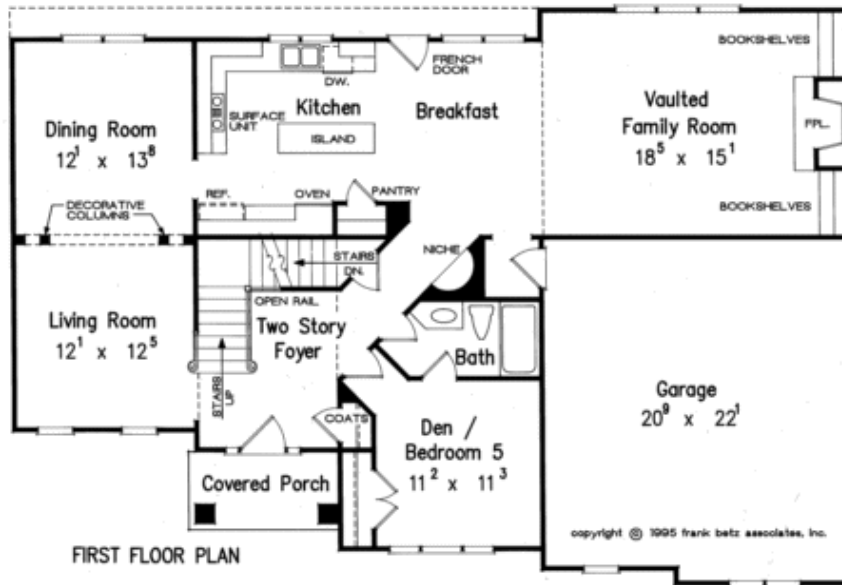
Bedrooms	5
Baths	3.0

### Dimensions

Width	46' - 0"
Depth	45' - 6"
Height	30' - 9"



## "The Whitehaven" Model 6145



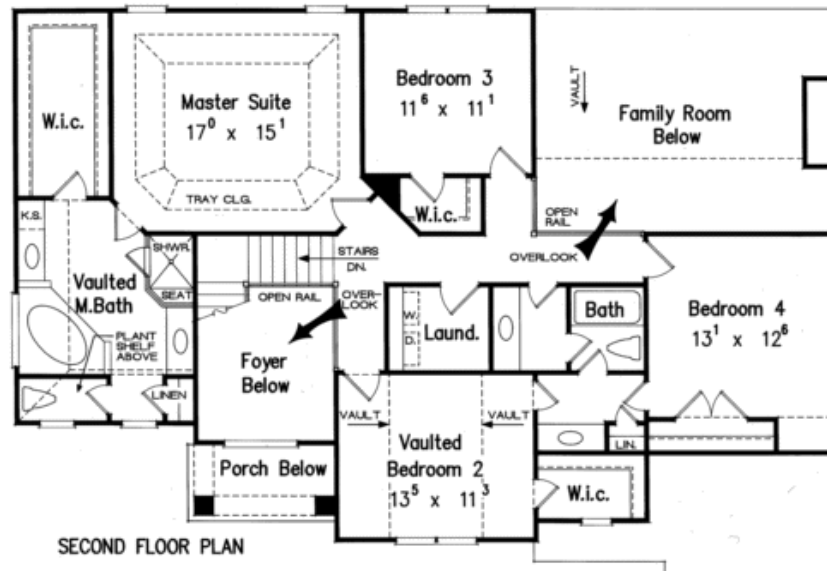
### Square Footage

Total	2793
First Floor	1413
Second Floor	1380
Garage	482

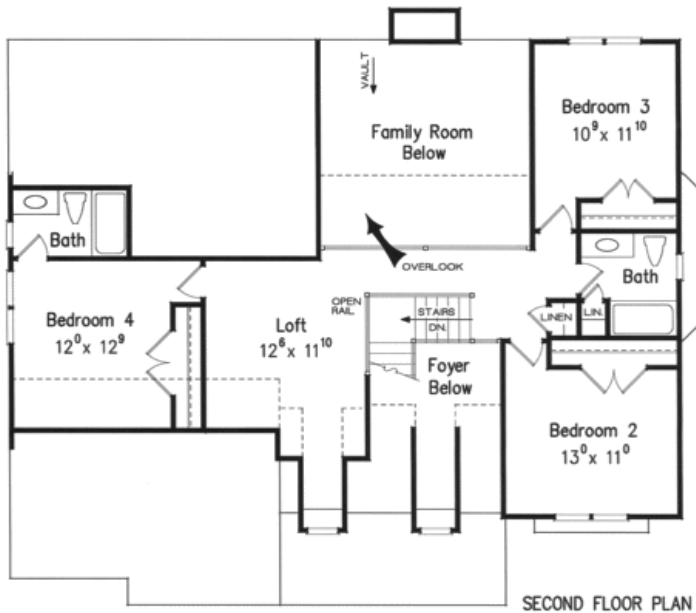
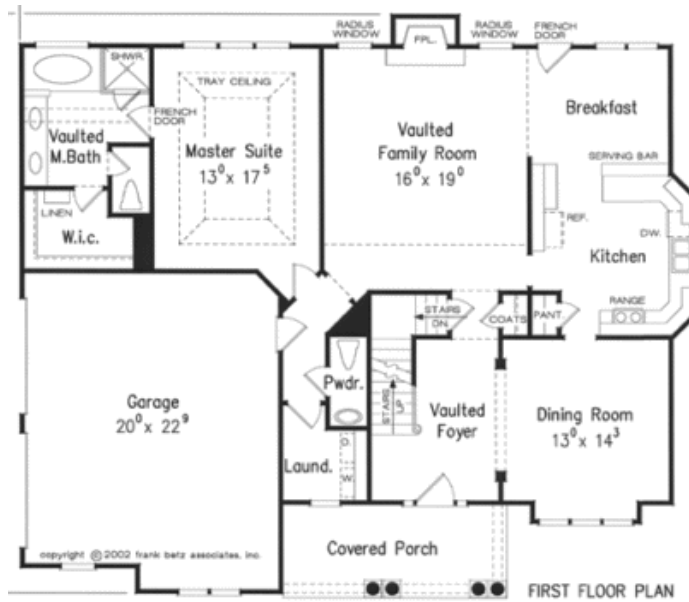
Bedrooms	5
Baths	3.0

### Dimensions

Width	57' - 0"
Depth	39' - 0"
Height	34' - 8"



## "The Lullwater" Model 6147



### Square Footage

Total	2438
First Floor	1509
Second Floor	929
Garage	488

Bedrooms	4
Baths	3.5

### Dimensions

Width	53' - 0"
Depth	45' - 4"
Height	26' - 0"